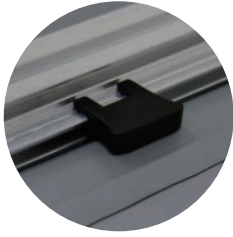




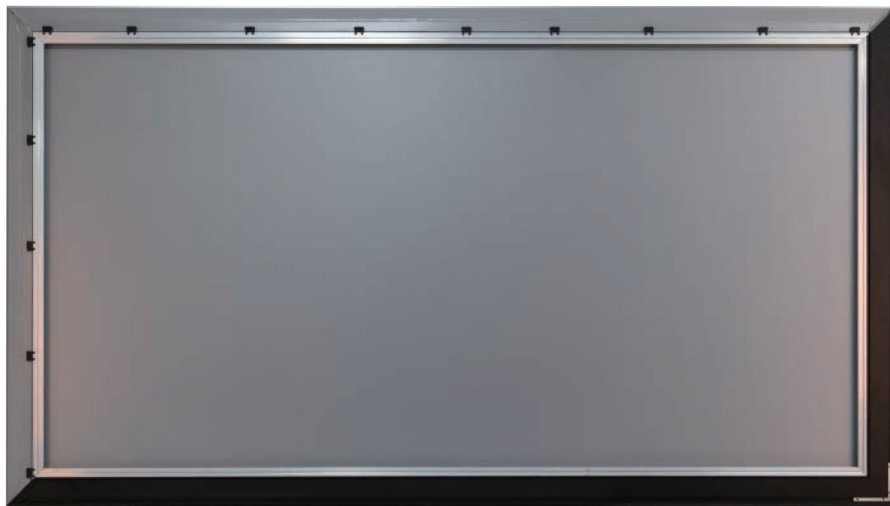
NEW

FIXED FRAME SCREEN- ULTRA THIN

ADVANTAGE FRIENDLY FEATURES



Patent Mount
Unique fabric
tension design Fast
Installation in
minutes

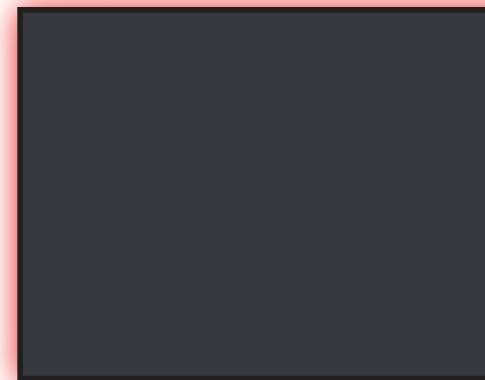


Unique Fabric Tension design user friendly

All aluminum structure, reinforced corner seamless butt joint, high strength, light weight, totally different to the traditional spring fixed screen, innovative sliding button installation design, saving time and effort, simple and practical, convenient and fast.



26mm Thickness , 7.5mm Wide Or Zero Edge



LED backlight
Remote control to adjust the light



Fabric : 4K Matte White.



1.0



Active 3D , 4K ULTRA HD, and HDR Ready.



180° Viewing Angle for wide diffusion uniformity



Black backing eliminates light penetration for greater picture clarity .



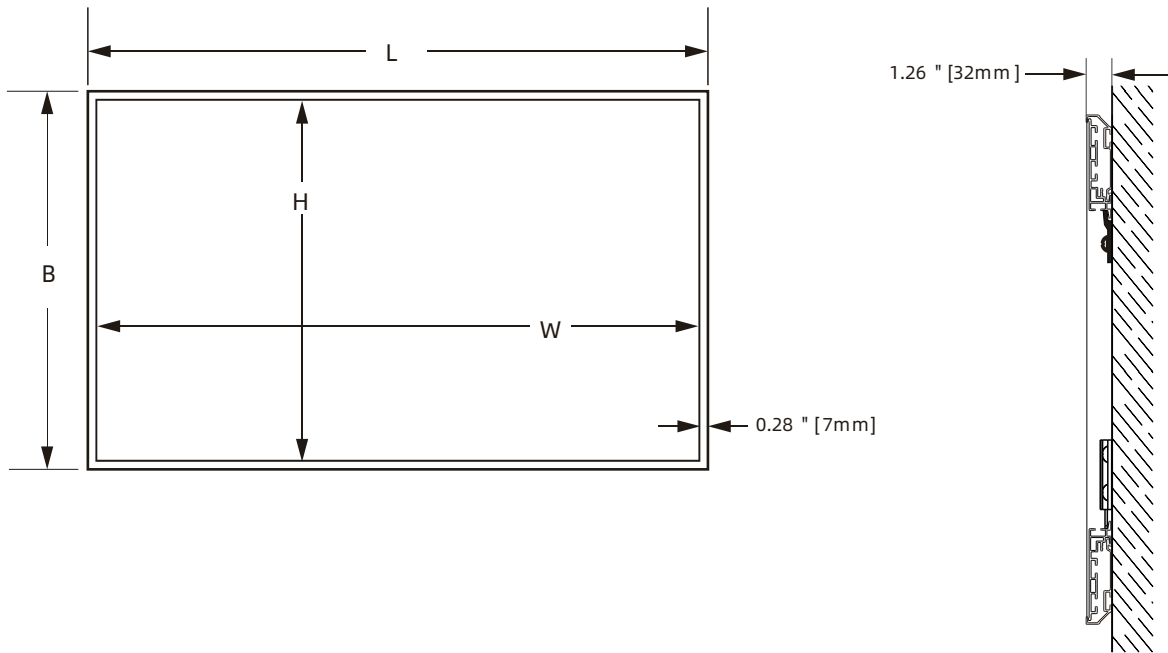
Outstanding Picture quality. Resolution or brightness.



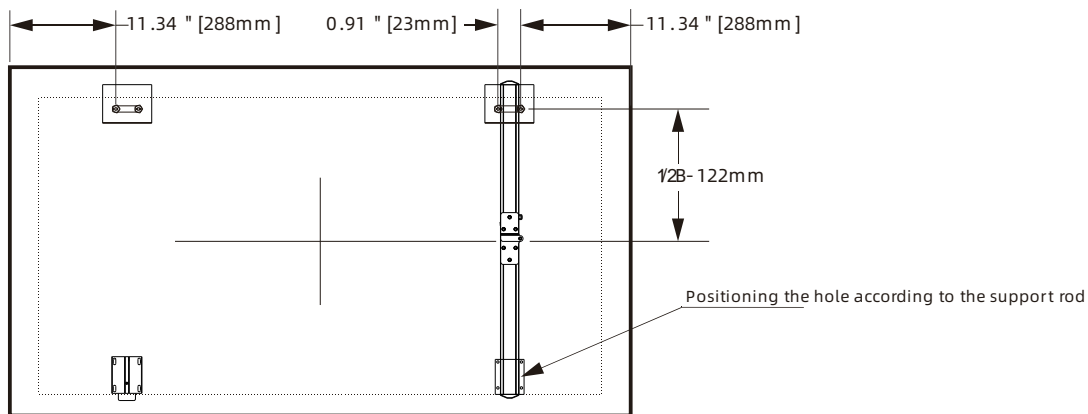
Fixed Frame Screen- ultra thin size »

*Unit:mm

FORMAT	DIAG. SIZE	VIEWING AREA	OVERALL DIMENSIONS		PACKAGE DIMENSIONS		APPROX. WEIGHT(Kg)		APPROX. WEIGHT(Lbs)	
		(WxH)	L	B	joint (W1xH1xL1)	non-joint (W1xH1xL1)	joint	non-joint	joint	non-joint
16:9	92"	2032x1143	2047	1158	315x140x1398	260x140x2132	22.2	21.7	49.0	47.9
	100"	2214x1245	2229	1260	315x140x1500	260x140x2314	23.3	22.8	51.4	50.3
	106"	2346x1320	2361	1335	315x140x1575	260x140x2446	24.1	23.7	53.2	52.2
	110"	2435x1370	2450	1385	315x140x1625	260x140x2535	24.7	24.3	54.4	53.5
	120"	2657x1495	2672	1510	315x140x1750	260x140x2757	26.1	25.7	57.5	56.7
	133"	2944x1656	2959	1671	315x140x1911	260x140x3044	28.0	27.6	61.6	60.9
	150"	3320x1868	3335	1883	315x140x2123	260x140x3420	30.5	30.2	67.1	66.6
	160"	3542x1992	3557	2007	315x140x2247	260x140x3642	32.0	31.8	70.5	70.0
	180"	3984x2241	3999	2256	315x140x2496	260x140x4084	35.0	34.9	77.3	77.0
	200"	4427x2490	4442	2505	315x140x2745	260x140x4527	38.2	38.2	84.3	84.2
	220"	4870x2739	4885	2754	315x140x2994	260x140x4970	41.5	41.6	91.5	91.6
	250"	5534x3113	5549	3128	315x140x3368	260x140x5634	46.6	46.8	102.8	103.2
16:10	92"	1982x1239	1997	1254	315x140x1494	260x140x2082	22.4	21.7	49.3	47.9
	100"	2154x1346	2169	1361	315x140x1601	260x140x2254	23.5	22.8	51.8	50.3
	106"	2283x1427	2298	1442	315x140x1682	260x140x2383	24.3	23.7	53.6	52.2
	110"	2370x1480	2385	1495	315x140x1735	260x140x2470	24.9	24.3	54.8	53.5
	120"	2585x1616	2600	1631	315x140x1871	260x140x2685	26.3	25.7	58.0	56.7
	133"	2865x1790	2880	1805	315x140x2045	260x140x2965	28.2	27.6	62.1	60.9
	150"	3230x2020	3245	2035	315x140x2275	260x140x3330	30.7	30.2	67.7	66.6
	160"	3446x2154	3461	2169	315x140x2409	260x140x3546	32.2	31.8	71.1	70.0
	180"	3877x2423	3892	2438	315x140x2678	260x140x3977	35.4	34.9	78.0	77.0
	200"	4308x2692	4323	2707	315x140x2947	260x140x4408	38.6	38.2	85.0	84.2
	220"	4739x2962	4754	2977	315x140x3217	260x140x4839	41.9	41.6	92.4	91.6
	250"	5385x3366	5400	3381	315x140x3621	260x140x5485	47.1	46.8	103.7	103.2
2.35:1	96"	2244x955	2259	970	315x140x1215	260x140x2344	22.4	22.3	49.3	49.1
	100"	2337x994	2352	1009	315x140x1261	260x140x2437	22.9	22.8	50.5	50.3
	106"	2478x1054	2493	1069	315x140x1332	260x140x2578	23.7	23.7	52.3	52.2
	119"	2781x1183	2796	1198	315x140x1483	260x140x2881	25.5	25.6	56.3	56.4
	126"	2945x1253	2960	1268	315x140x1565	260x140x3045	26.5	26.6	58.4	58.6
	133"	3108x1323	3123	1338	315x140x1647	260x140x3208	27.5	27.6	60.6	60.9
	150"	3506x1492	3521	1507	315x140x1846	260x140x3606	30.0	30.2	66.1	66.6
	159"	3716x1581	3731	1596	315x140x1951	260x140x3816	31.3	31.6	69.0	69.7
	180"	4207x1790	4222	1805	315x140x2196	260x140x4307	34.5	34.9	76.0	77.0
	200"	4675x1989	4690	2004	315x140x2430	260x140x4775	37.6	38.2	83.0	84.2



Installation



PRODUCT NOTES

Screen length calculation formula: $L = W + 15\text{mm}$

Packaging volume calculation formula: Non-joint: $V = 0.0364 \times (W + 100/1000) \text{ m}^3$

[16:9/16:10] Joint: $V = 0.0441 \times (H + 255/1000) \text{ m}^3$

[2.35:1] Joint: $V = 0.0441 \times (W + 2 + 92.5/1000) \text{ m}^3$

Explanation:

1. The allowable error between the theoretical size and the actual size of the projected area is $\pm 5\text{mm}$, and the allowable error between the physical size and the size in the table is $\pm 3\text{mm}$, please refer to the actual one.

2. The allowable error between the actual weight and the weight in the table is $\pm 1\text{kg} / 2.2\text{Lbs}$

- Specifications subject to change without notice.
- Custom formats and sizes are available upon request.
- Detail dimensional drawings, wiring diagrams and installation instructions available upon request.

Liberty SCREEN PRO®