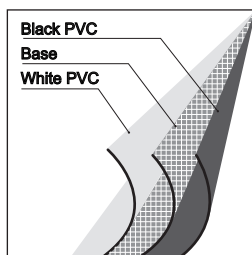
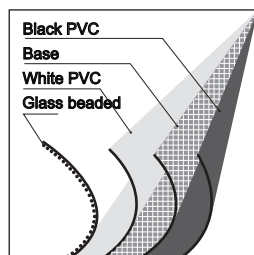


## SCREEN FABRIC



MATTE WHITE SCREEN SURFACE



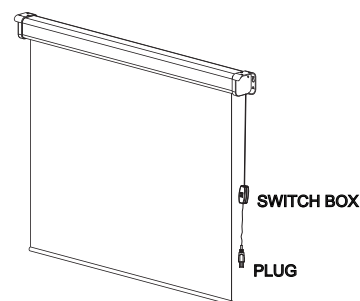
GLASS BEADED SCREEN SURFACE

Thank you for choosing our screens.

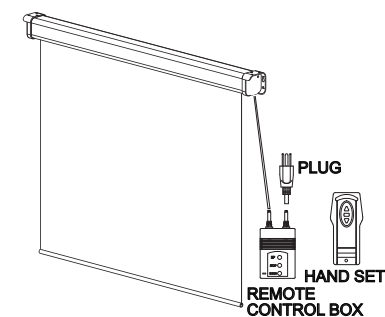
All screens have passed the strict quality inspection before delivery. Read this manual carefully to ensure proper usage. You may also find the solution if you have problems.

Important Attention the installation of the screen, the electric connections, the setting of the limit switches, must be made from trained engineer only.

## THE SHAPE OF MOTORIZED SCREEN.

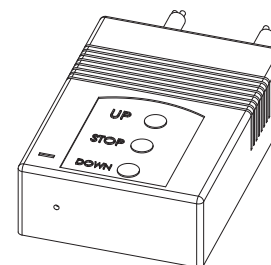


MOTORIZED SCREEN WITH SWITCH BOX.

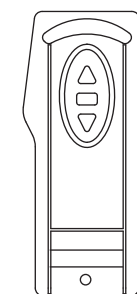


MOTORIZED SCREEN WITH REMOTE CONTROL.

## SPARE PARTS LIST FOR MOTORIZED SCREEN

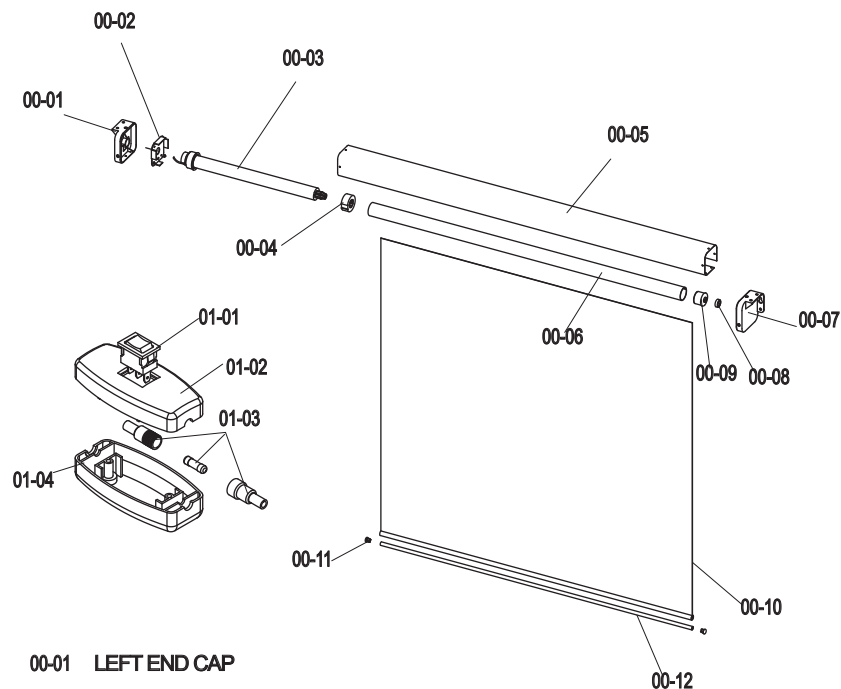


REMOTE CONTROL BOX

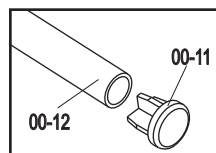


HAND SET

2



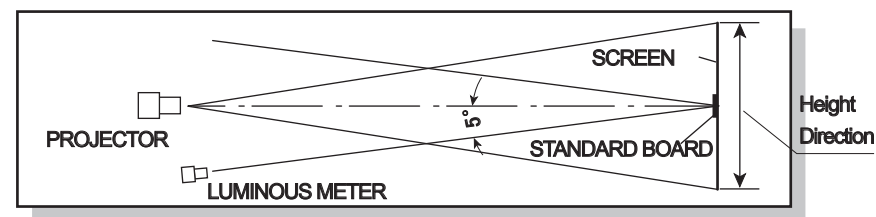
- |       |                |       |                           |
|-------|----------------|-------|---------------------------|
| 00-01 | LEFT END CAP   | 01-01 | TOGGLE SWITCH             |
| 00-02 | MOTOR HOLDER   | 01-02 | UPPER COVER OF SWITCH BOX |
| 00-03 | TUBULAR MOTOR  | 01-03 | FUSE                      |
| 00-04 | ROTOR WHEEL    | 01-04 | LOWER COVER OF SWITCH BOX |
| 00-05 | SCREEN HOUSING |       |                           |
| 00-06 | ROLLER         |       |                           |
| 00-07 | RIGHT END CAP  |       |                           |
| 00-08 | BEARING        |       |                           |
| 00-09 | DRING WHEEL    |       |                           |
| 00-10 | SCREEN FABRIC  |       |                           |
| 00-11 | RUBBER END CAP |       |                           |
| 00-12 | PULL BAR       |       |                           |



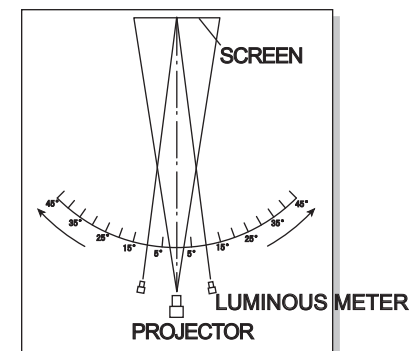
7

## TECHNICAL DATA

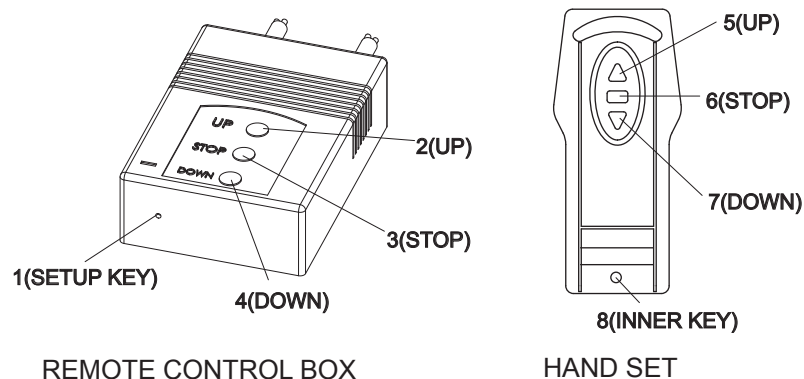
- ▶ **Matte White Screen**  
Gain: 0.9  
Viewing Angle: >160  
High color rendering, high resolution.
- ▶ **Glass Beaded Screen**  
Gain: 2.2  
Viewing Angle: >30  
High color rendering, high resolution.
- ▶ **Gain Measurement:** refer the fig below  
Standard: JB/T8389 issued by Ministry of Machinery Industry



- ▶ **Viewing Angle Measurement:** refer the fig below  
Standard: JB/T8389 issued by Ministry of Machinery Industry

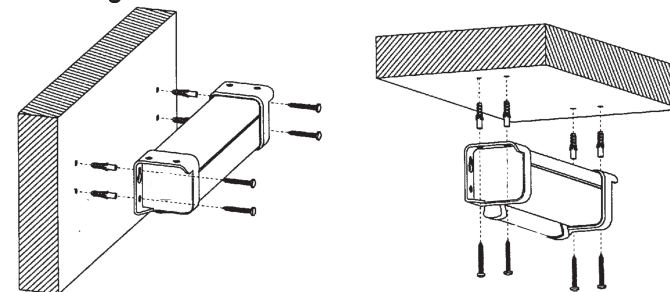


1. Press down the set up key 1 of the remote control box (or the inner key 8 of the hand set) one time, you will hear the sound "du-du-". Then the remote control box is in set up model.
2. When the remote control box is in set up model, press the key 2 of the remote control box, after hearing the "du-du-", press any key of the invalid hand set, after hearing "du—" then this hand set is matched with the remote control box .
3. When the remote control box is in set up model, press the key 7 of the valid hand set or key 4 of the remote control box , after hearing the "du—du—" the up and down key function of the hand set and remote control box is exchanged.
4. When the remote control box is in set up model, press the key 6 of the valid hand set, after hearing "dudu", then this hand set and the remote control box are locked. Press the key 6 of this hand set again to unlock it.
5. Press the setup key 1 of the remote control box for more then 9 seconds till to hear a sound "du—", then the hand set is invalid from this remote control box.
6. By repeating the above step 2, you can sent more then one set of hand set to match with one remote control box.



### OPERATING INSTRUCTION

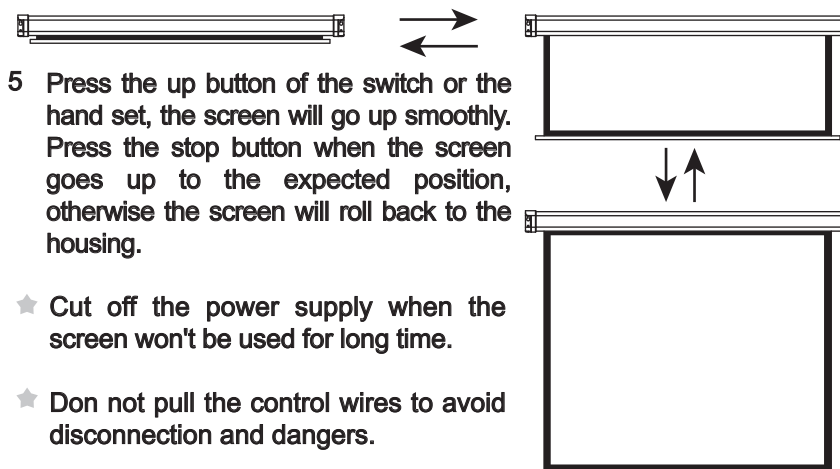
1. Unpack the screen carefully, be sure the screen is in good condition, check all the accessories are packed inside the carton.
2. Check the voltage and frequency marked on the screen is in accordance with the local power supply. It is suggested only to use the screens indoor under normal temperature and humidity.
3. Refer the fig below to fix the screen to the wall or to the ceiling.



fix the screen to the wall.

fix the screen to the ceiling.

4. Plug in the power supply. Press the down button of the switch box or the hand set, the screen will go down smoothly. Press the stop button when the screen goes down to the expected position, otherwise the screen will stop at the lower limited position automatically.



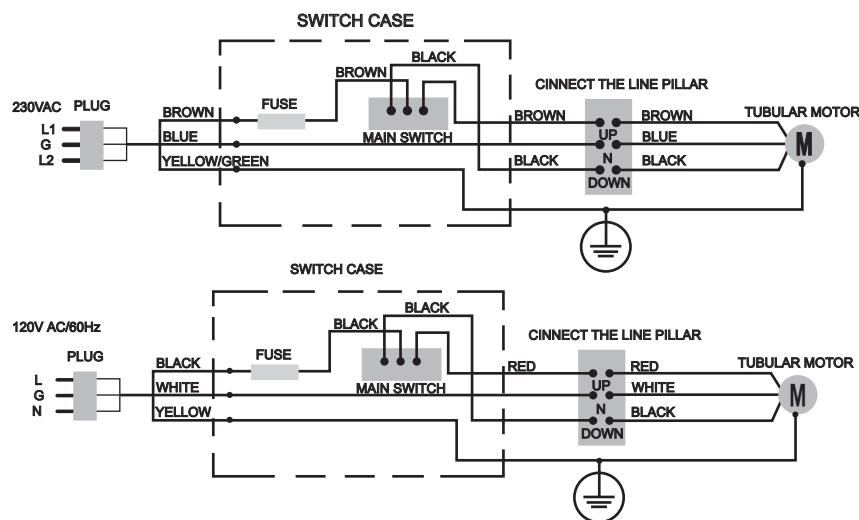
5. Press the up button of the switch or the hand set, the screen will go up smoothly. Press the stop button when the screen goes up to the expected position, otherwise the screen will roll back to the housing.

- ★ Cut off the power supply when the screen won't be used for long time.
- ★ Don not pull the control wires to avoid disconnection and dangers.

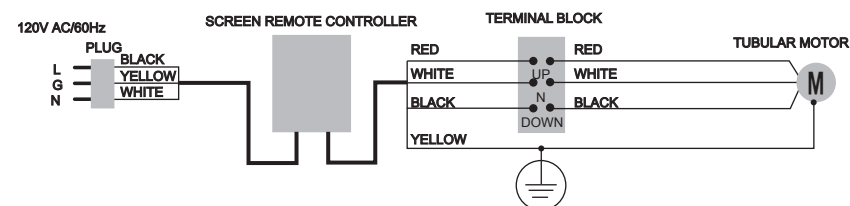
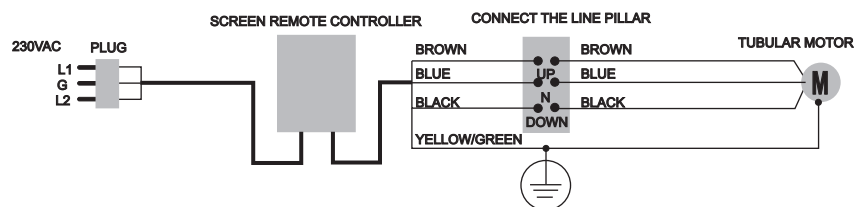
## TROUBLE SHOOT

- ▶ Always call qualified engineer for maintenance to avoid dangers. Always unplug the power supply first before disassemble the screen.
- ▶ Check power whether or not is provided.
- ▶ Check the fuse whether or not is broken.
- ▶ Check wire connection

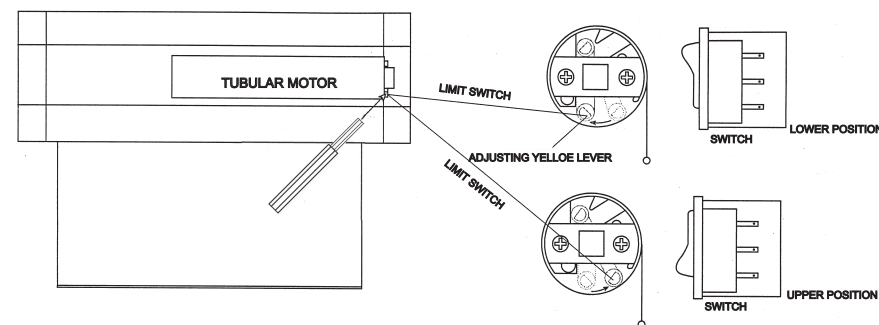
If your motorized screen is with switch control, please refer the fig below for electric connection.



If your motorized screen is with remote control, please refer the fig below for electric connection.



- ▶ If remote control does not work well, please check the battery and replace new one.
- ▶ The limit time of tubular motor is 5 minutes without stop. It will turn on the overhead switch after long time using (until it becomes cool completely)
- ▶ Upper and lower limit switch is in the right end of the screen housing. Refer the fig below to adjust the upper limit and the lower limit. For the safety reason, never disassemble the limit switch.



## SPECIAL FUNCTION: TO SET UP THE REMOTE CONTROLLER

Important Attention: Press button continuously, each operation must be within 10 seconds.