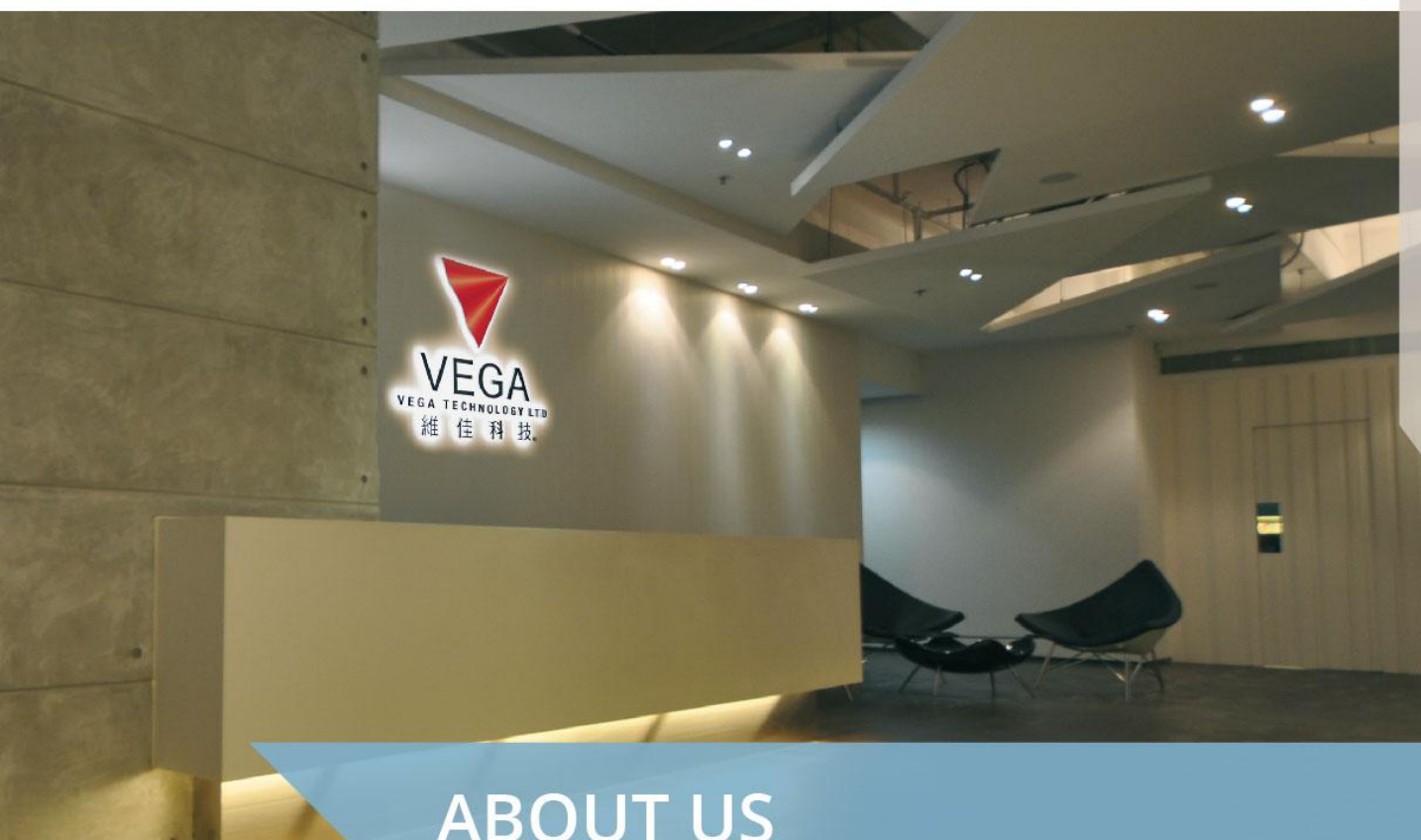




PROJECTION SCREENS

PRODUCT CATALOGUE



ABOUT US

VEGA MFG. LTD was found in Hong Kong since early 2000. Coupled with our fully-owned ISO-certified factory in Shenzhen to back up our production, we are specialized in manufacturing a wide range of projection screens and audio visual peripherals for our customers abroad on both OEM and ODM basis.

Under the management of our headquarter- VEGA Technology Ltd. in Hong Kong, we follow a high level of systematization in our daily operation and at the same time supervise our factory stringently to ensure efficient production and stable product quality.

With a view to standing out in the industry we leave no stone unturned in product innovation and development to enhance our competitiveness. In practice, we keep on developing new models every year to cope with the rapid changing market and to satisfy the customers' needs.

INDEX

MANUAL SCREEN

Neptune Pro-Line SRC	1
Neptune Pro-Line	2
Manto Eco-Line	3
Juno Eco-Line	4
Athena Eco-Line	5
Ceres Eco-Line SRC	6

ELECTRIC SCREEN

Linda Elite-Line	7
Hermes Pro-Line	8
Manto Pro-Line	9
Neptune Pro-Line	10
Neptune Eco-Line	11
Athena Eco-Line	12
Ceres Eco-Line	13

ENGINEERING ELECTRIC SCREEN

Giant Tension Engineering	14
Giant Engineering	15
Premium In-ceiling	16

MULTI CONTROL TAB-TENSIONED SCREEN

Premium Tab Tensioned	17
Supreme Tab Tensioned	18
Hermes Tab Tensioned	19

FIXED FRAME SCREEN

HomeMax Curved	20
PanelFrame MKII	21
PanelFrame	22
Cineplus	23

PORTABLE SCREEN

Easy Fold	24
Scissor Floor	25
Pole Floor	26
Backyard	27
Deskview MKII	28
Deskview	29
Vesta	30
Athena Eco-Line	31
Ceres Eco-Line	32

ACCESSORIES

Remote control set	33
Remote control set	34
Remote & Wall mount bracket	35
Fabric specifications	36
Certification	37

NEPTUNE *PRO-LINE SRC MANUAL SCREEN*

Vega Neptune pro-line manual screen combines comfortable viewing and simplicity in use. It satisfies the most exacting viewers with clear black border for definite aspect.



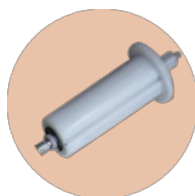
SLOW RETURN CONTROL

Gear box type slow return control gives the most consistent performance.



UNIQUE APPEARANCE

Special tooling for unique Semi-circular casing. Coated with white powder make it differentiates from other standard product in the market.



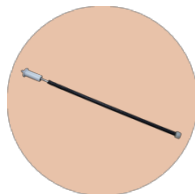
LOCKING SYSTEM

Intelligent self locking system allows quick lock and release at any desired position.



DURABLE

Galvanized steel casing with reinforced ribs, keeping the casing straight against the torque from the roller spring.



SPRING ROLL

Reliable spring mechanism guarantees smooth rolling and retracting of screen fabric.

Specifications

Product Code	Screen Size (HxW, inches)	Viewing Area(mm)		Border(mm)		Product Dimension LxWxH(mm)	Packing Dimension LxWxH(mm)	N.W(kg)	G.W. (kg)
		Height	Width	Upper / Lower / Side					
1:1 Square Format									
NRW050050	70"(50"x50")	1270	1270	45/30/30		1399x82x93	1494x140x130	5.0	5.8
NRW060060	84"(60"x60")	1524	1524	65/30/30		1653x82x93	1748x140x130	6.0	6.9
NRW070070	100"(70"x70")	1778	1778	45/30/30		1907x82x93	2002x140x130	7.0	8.0
NRW080080	113"(80"x80")	2032	2032	65/40/40		2181x82x93	2276x140x130	8.2	9.3
NRW096096	136"(96"x96")	2358	2358	65/40/40		2507x82x93	2602x140x130	9.6	10.9
4:3 Video Format									
NRW050067	84"(50"x67")	1280	1707	45/30/30		1836x82x93	1931x140x130	6.3	7.3
NRW060080	100"(60"x80")	1524	2032	65/40/40		2181x82x93	2276x140x130	7.6	8.7
NRW072096	120"(72"x96")	1769	2358	65/40/40		2507x82x93	2602x140x130	8.9	10.2
16:9 HDTV Format									
NRW040070	81"(40"x70")	1000	1778	450/40/40		1927x82x93	2022x140x130	6.7	7.7
NRW045080	92"(45"x80")	1143	2032	450/40/40		2181x82x93	2276x140x130	7.6	8.8
NRW049087	100"(49"x87")	1243	2210	450/40/40		2359x82x93	2454x140x130	8.3	9.5
NRW054096	110"(54"x96")	1326	2358	400/40/40		2507x82x93	2602x140x130	8.8	10.1
16:10 Wide Format									
NRW042067	80"(42"x67")	1064	1702	450/30/30		1831x82x93	1926x140x130	6.5	7.5
NRW050080	94"(50"x80")	1270	2032	450/40/40		2181x82x93	2276x140x130	7.8	8.9
NRW053085	100"(53"x85")	1346	2159	450/40/40		2308x82x93	2403x140x130	8.3	9.5
NRW058093	110"(58"x93")	1474	2358	450/40/40		2507x82x93	2602x140x130	9.1	10.3

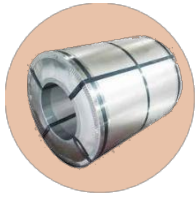
NEPTUNE *PRO-LINE MANUAL SCREEN*

Vega Neptune pro-line manual screen combines comfortable viewing and simplicity in use. It satisfies the most exacting viewers with clear black border for definite aspect.



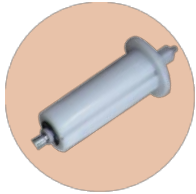
UNIQUE APPEARANCE

Special tooling for unique Semi-circular casing. Coated with white powder make it differentiates from other standard product in the market.



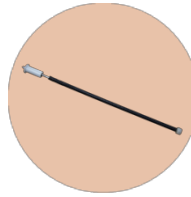
DURABLE

Galvanized steel casing with reinforced ribs, keeping the casing straight against the torque from the roller spring.



LOCKING SYSTEM

Intelligent self locking system allows quick lock and release at any desired position.



SPRING ROLL

Reliable spring mechanism guarantees smooth rolling and retracting of screen fabric.

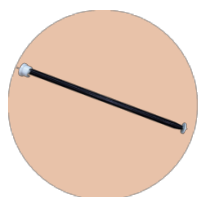


Specifications

Product Code	Screen Size (HxW, inches)	Viewing Area(mm) Height Width	Border(mm) Upper / Lower / Side	Product Dimension LxWxH(mm)	Packing Dimension LxWxH(mm)	N.W(kg)	G.W. (kg)
1:1 Square Format							
NMW050050	70"(50"x50")	1270 1270	45/30/30	1399x82x93	1494x140x130	5.0	5.8
NMW060060	84"(60"x60")	1524 1524	65/30/30	1653x82x93	1748x140x130	6.0	6.9
NMW070070	100"(70"x70")	1778 1778	45/30/30	1907x82x93	2002x140x130	7.0	8.0
NMW080080	113"(80"x80")	2032 2032	65/40/40	2181x82x93	2276x140x130	8.2	9.3
NMW096096	136"(96"x96")	2358 2358	65/40/40	2507x82x93	2602x140x130	9.6	10.9
NMW108108	153"(108"x108")	2743 2743	80/40/40	2892x89x110	2987x175x155	11.5	13.0
4:3 Video Format							
NMW050067	84"(50"x67")	1280 1707	45/30/30	1836x82x93	1931x140x130	6.3	7.3
NMW060080	100"(60"x80")	1524 2032	65/40/40	2181x82x93	2276x140x130	7.6	8.7
NMW072096	120"(72"x96")	1769 2358	65/40/40	2507x82x93	2602x140x130	8.9	10.2
NMW081108	135"(81"x108")	2057 2743	100/40/40	2892x89x110	3009x175x155	12.5	14.3
NMW090120	150"(90"x120")	2286 3048	100/60/60	3262x89x110	3379x175x155	14.3	16.4
16:9 HDTV Format							
NMW040070	81"(40"x70")	1000 1778	450/40/40	1927x82x93	2022x140x130	6.7	7.7
NMW045080	92"(45"x80")	1143 2032	450/40/40	2181x82x93	2276x140x130	7.6	8.8
NMW049087	100"(49"x87")	1243 2210	450/40/40	2359x82x93	2454x140x130	8.3	9.5
NMW054096	110"(54"x96")	1326 2358	400/40/40	2507x82x93	2602x140x130	8.8	10.1
NMW059105	120"(59"x105")	1500 2667	450/40/40	2816x82x93	2911x140x130	10.0	11.5
NMW064113	130"(64"x113")	1614 2870	450/40/40	3019x82x93	3114x140x130	10.9	12.4
NMW068120	138"(68"x120")	1715 3048	450/60/60	3248x89x110	3343x178x158	13.9	15.9
16:10 Wide Format							
NMW042067	80"(42"x67")	1064 1702	450/30/30	1831x82x93	1926x140x130	6.5	7.5
NMW050080	94"(50"x80")	1270 2032	450/40/40	2181x82x93	2276x140x130	7.8	8.9
NMW053085	100"(53"x85")	1346 2159	450/40/40	2308x82x93	2403x140x130	8.3	9.5
NMW058093	110"(58"x93")	1474 2358	450/40/40	2507x82x93	2602x140x130	9.1	10.3
NMW064102	120"(64"x102")	1619 2591	450/40/40	2740x82x93	2835x140x130	10.0	11.4
NMW069110	130"(69"x110")	1753 2794	450/40/40	2943x82x93	3038x140x130	10.9	12.4
NMW074119	140"(74"x119")	1889 3023	450/60/60	3234x89x110	3329x175x155	14.2	16.2

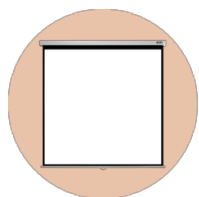
MANTO *ECO-LINE MANUAL SCREEN*

Vega Manto eco-line manual screen is ideal for business presentation in conference room at a reasonable price. With the slat bar totally hidden inside the casing, it is good for false ceiling installation.



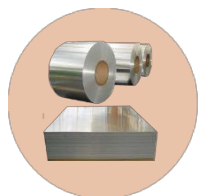
SPRING ROLL

Reliable spring mechanism guarantees smooth rolling and retracting of screen fabric.



DEFINITE ASPECT

Supplied with extra large upper black border for realization of ideal viewing height.



DURABLE

Made of cool rolled steel, the housing is ultimate rigid and stand straight under any circumstances.



LOCKING SYSTEM

Double locking pieces allows quick lock and release.



MULTIPLE MOUNTING SYSTEM

Screen supplied with 3 different mounting systems: wall mounting, ceiling mounting and front hanging.



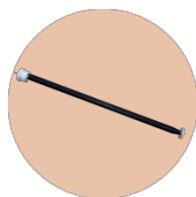
HIDDEN SLAT BAR

The triangular slat bar retracts into the case for a clean finish.

Specifications

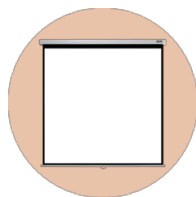
Product Code	Screen Size (HxW, inches)	Viewing Area(mm)		Border(mm)	Product Dimension LxWxH(mm)	Packing Dimension LxWxH(mm)	N.W(kg)	G.W. (kg)
		Height	Width	Upper / Lower / Side				
1:1 Square Format								
MEW050050	70"(50"x50")	1270	1270	40/30/30	1430x67x75	1492x135x130	5.1	5.8
MEW060060	85"(60"x60")	1524	1524	40/30/30	1684x67x75	1746x135x130	6.1	6.9
MEW070070	100"(70"x70")	1778	1778	40/30/30	1938x67x75	2000x135x130	7.2	8.1
MEW080080	113"(80"x80")	2032	2032	40/40/40	2212x67x75	2274x135x130	8.4	9.5
MEW096096	136"(96"x96")	2358	2358	40/40/40	2540x67x75	2602x135x130	9.9	11.2
4:3 Video Format								
MEW050067	84"(50"x67")	1280	1707	40/30/30	1867x67x75	1929x135x130	6.5	7.4
MEW060080	100"(60"x80")	1524	2032	40/40/40	2212x67x75	2274x135x130	7.8	8.9
MEW072096	120"(72"x96")	1769	2358	40/40/40	2540x67x75	2602x135x130	9.2	10.5
16:9 HDTV Format								
MEW040070	81"(40"x70")	1000	1778	450/30/30	1938x67x75	2000x135x130	6.9	7.8
MEW045080	92"(45"x80")	1143	2032	450/40/40	2212x67x75	2274x135x130	7.9	9.0
MEW049087	100"(49"x87")	1243	2210	450/40/40	2390x67x75	2452x135x130	7.9	9.1
MEW054096	110"(54"x96")	1326	2358	450/40/40	2540x67x75	2602x135x130	9.2	10.5
16:10 Wide Format								
MEW042067	79"(42"x67")	1064	1702	450/30/30	1862x67x75	1924x135x130	6.7	7.6
MEW050080	94"(50"x80")	1270	2032	450/40/40	2212x67x75	2274x135x130	8.0	9.1
MEW053085	100"(53"x85")	1349	2159	450/40/40	2339x67x75	2401x135x130	8.6	9.7
MEW058093	110"(58"x93")	1476	2362	450/40/40	2542x67x75	2604x135x130	9.4	10.7

Vega Juno eco-line manual screen is a low-cost version which especially suitable for classrooms, which is the most competitive one to go with tenders for audio-visual installations or government projects.



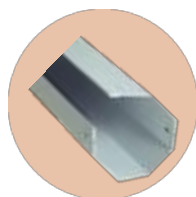
SPRING ROLL

Reliable spring mechanism guarantees smooth rolling and retracting of screen fabric.



DEFINITE ASPECT

Supplied with extra large upper black border for realization of ideal viewing height.



DURABLE

Its sturdy and durable construction makes it an ideal manual projection screen for classroom.



LOCKING SYSTEM

Double locking pieces allows quick lock and release.



MULTIPLE MOUNTING SYSTEM

Screen supplied with 3 different mounting systems: wall mounting, ceiling mounting and front hanging.

Specifications

Product Code	Screen Size (HxW, inches)	Viewing Area(mm) Height Width	Border(mm) Upper / Lower / Side	Product Dimension LxWxH(mm)	Packing Dimension LxWxH(mm)	N.W(kg)	G.W. (kg)
1:1 Square Format							
JEW050050	70"(50"x50")	1270 1270	40/30/30	1443x63x63	1521x125x125	3.7	4.4
JEW060060	85"(60"x60")	1524 1524	40/30/30	1697x63x63	1775x125x125	4.4	5.2
JEW070070	100"(70"x70")	1778 1778	40/30/30	1951x63x63	2029x125x125	5.2	6.1
JEW080080	113"(80"x80")	2032 2032	40/40/40	2224x71x71	2302x140x125	6.9	8.0
JEW096096	136"(96"x96")	2358 2358	40/40/40	2552x71x71	2630x140x125	8.1	9.4
4:3 Video Format							
JEW050067	84"(50"x67")	1280 1707	40/30/30	1880x63x63	1958x125x125	4.7	5.6
JEW060080	100"(60"x80")	1524 2032	40/40/40	2227x63x63	2305x125x125	5.7	6.7
JEW072096	120"(72"x96")	1769 2358	40/40/40	2552x71x71	2630x140x125	7.5	8.8
16:9 HDTV Format							
JEW040070	81"(40"x70")	1000 1778	450/30/30	1951x63x63	2029x125x125	4.9	5.9
JEW045080	92"(45"x80")	1143 2032	450/40/40	2205x63x63	2283x125x125	5.6	6.7
JEW049087	100"(49"x87")	1243 2210	450/40/40	2402x71x71	2480x140x125	7.0	8.2
JEW054096	110"(54"x96")	1326 2358	450/40/40	2552x71x71	2630x140x125	7.5	8.8
16:10 Wide Format							
JEW042067	79"(42"x67")	1064 1702	450/30/30	1875x63x63	1953x125x125	4.8	5.7
JEW050080	94"(50"x80")	1270 2032	450/40/40	2205x63x63	2283x125x125	5.7	6.8
JEW053085	100"(53"x85")	1349 2159	450/40/40	2351x71x71	2429x140x125	7.0	8.2
JEW058093	110"(58"x93")	1476 2362	450/40/40	2554x71x71	2632x140x125	7.6	8.9

ATHENA *ECO-LINE MANUAL SCREEN*

Vega ATHENA eco-line manual screen is the best budget choice for office presentation or education purpose. It is the most competitive one to go with tenders or government project.



ENVIRONMENTAL FRIENDLY

The housing is made of pre-painted steel sheet by special extrusion tooling, eliminating the environmental impact of powder coating.



INTER-LOCKING SYSTEM

Multi-locking pieces allows user to lock the screen at desired position at approximately every 6cm – 7cm interval.



EASY INSTALLATION

Wall mounting or ceiling hanging are available, which suit for most of installation environment.

Specifications								
Product Code	Screen Size (HxW, inches)	Viewing Area(mm) Height	Width	Border(mm) Upper / Lower / Side	Product Dimension LxWxH(mm)	Packing Dimension LxWxH(mm)	N.W(kg)	G.W. (kg)
1:1 Square Format								
BEW070070	100"(70"x70")	1778	1778	40/30/30	1953x80x108	1999x140x130	5.2	6.1
BEW080080	113"(80"x80")	2032	2032	40/40/40	2227x80x108	2273x140x130	6.9	8.0
BEW087087	123"(87"x87")	2210	2210	40/40/40	2405x80x108	2451x140x130	7.5	8.7
BEW096096	136"(96"x96")	2358	2358	40/40/40	2553x80x108	2599x140x130	8.1	9.4
4:3 Video Format								
BEW052070	87"(52"x70")	1334	1778	40/30/30	1953x80x108	1999x140x130	4.9	5.8
BEW060080	100"(60"x80")	1524	2032	40/40/40	2227x80x108	2273x140x130	5.7	6.7
BEW065087	109"(65"x87")	1657	2210	40/40/40	2405x80x108	2451x140x130	7.0	8.2
BEW072096	120"(72"x96")	1769	2358	40/40/40	2553x80x108	2599x140x130	7.5	8.8
16:9 HDTV Format								
BEW039070	80"(39"x70")	1000	1778	300/30/30	1953x80x108	1999x140x130	4.6	5.5
BEW045080	92"(45"x80")	1143	2032	300/40/40	2227x80x108	2273x140x130	7.6	7.6
BEW049097	100"(49"x87")	1243	2210	300/40/40	2405x80x108	2451x140x130	7.8	7.8
BEW054096	110"(54"x96")	1372	2438	300/40/40	2553x80x108	2599x140x130	8.8	8.8

CERES *ECO-LINE SRC MANUAL SCREEN*

Vega CERES eco-line manual screen is the best budget choice for office presentation or education purpose. It is the most competitive one to go with tenders or government project.



SLOW RETURN CONTROL

Frictional type slow return mechanism can be added to work as a safety device, preventing accident release of put down handle, preventing damage of device or falling down of a hanged screen.



MATTE WHITE FABRIC

Multi-purpose matte white fabric offering gain factor at 1.0 with 110 degree viewing angle.



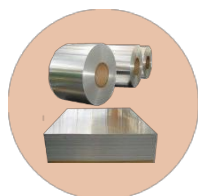
EASY INSTALLATION

Wall mounting or ceiling hanging are available, which suit for most of installation environment.



LOCKING SYSTEM

Ball lock system allows quick lock and release. Large size bearing increase its reliability.



DURABLE

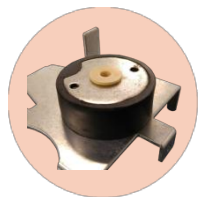
Made of cool rolled steel, the housing is ultimate rigid and stand straight under any circumstances.

Specifications

Product Code	Screen Size (HxW, inches)	Viewing Area(mm) Height Width	Border(mm) Upper / Lower / Side	Product Dimension LxWxH(mm)	Packing Dimension LxWxH(mm)	N.W(kg)	G.W. (kg)
1:1 Square Format							
CRW060060	85"(60"x60")	1524 1524	50/30/30	1655x82x110	1715x130x160	5.9	6.9
CRW070070	100"(70"x70")	1778 1778	50/30/30	1915x82x110	1975x130x160	7.4	8.4
CRW080080	113"(80"x80")	2032 2032	50/40/40	2187x82x110	2247x130x160	9.0	10.0
CRW096096	136"(96"x96")	2358 2358	50/40/40	2593x82x110	2653x130x160	10.0	11.5
4:3 Video Format							
CRW050067	80"(50"x67")	1280 1707	50/40/40	1865x82x110	1925x110x130	5.7	6.9
CRW060080	100"(60"x80")	1524 2032	50/40/40	2185x82x110	2245x110x130	6.6	7.8
CRW072096	120"(72"x96")	1829 2438	50/40/40	2595x82x110	2655x130x160	9.8	11.5
16:9 HDTV Format							
CRW045080	92 (45"x80")	1143 2032	300/40/40	2187x82x110	2247x130x160	6.8	7.8
CRW049087	100"(49"x87")	1245 2210	300/40/40	2365x82x110	2425x130x160	9.0	10.0
CRW052092	106"(52"x92")	1321 2337	300/40/40	2492x82x110	2552x130x160	9.5	10.5
CRW054096	110"(54"x96")	1372 2438	300/40/40	2593x82x110	2653x130x160	10.0	11.0

LINDA *ELITE-LINE ELECTRIC SCREEN*

Linda series of motorized projection screen is the elite line projection screen, which delivers great performance with an elegant, attractive appearance. It's the perfect choice for high quality corporate and entertainment applications.



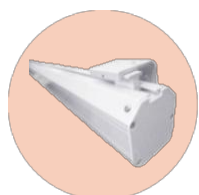
SHOCK ABSORPTION

High density rubber offer reliable support with ultimate shock absorption to minimize operational noise.



SILENT TUBULAR MOTOR

Silent tubular motor is stable, energy efficient that ensure effective and reliable operation.



EASY INSTALLATION

Fully sliding mount brackets included enable one-man quick installation.

ELEGANT

Powder-coated Aluminium casing with white fine gloss finishing in a stylish shape.



TOTAL CONTROL (OPTIONAL)

Total control solution for RF, IR, 12V trigger and programmable remote control.



Specifications

Product Code	Screen Size	Viewing Area(mm)		Border(mm)	Product Dimension LxWxH(mm)	Packing Dimension LxWxH(mm)	N.W(kg)	G.W. (kg)
	(HxW, inches)	Height	Width	Upper / Lower / Side				
1:1 Square Format								
LTW050050	70"(50"x50")	1270	1270	45/30/30	1476x92x101	1703x170x165	8.3	10.5
LTW060060	84"(60"x60")	1524	1524	45/30/30	1730x92x101	1957x170x165	9.9	12.5
LTW070070	100"(70"x70")	1778	1778	45/30/30	1984x92x101	2211x170x165	11.6	14.5
LTW080080	113"(80"x80")	2032	2032	45/40/40	2258x92x101	2485x170x165	13.0	16.3
LTW096096	136"(96"x96")	2358	2358	45/40/40	2584x92x101	2811x170x165	15.4	19.1
LTW108108	153"(108"x108")	2743	2743	45/40/40	2969x92x101	3196x170x165	17.8	20.6
LTW120120	170"(120"x120")	3048	3048	80/60/60	3314x92x101	3541x170x165	20.2	22.3
4:3 Video Format								
LTW050067	84"(50"x67")	1270	1702	45/30/30	1908x92x101	2135x170x165	11.1	13.9
LTW060080	100"(60"x80")	1524	2032	45/40/40	2258x92x101	2485x170x165	12.3	15.6
LTW072096	120"(72"x96")	1829	2438	45/40/40	2664x92x101	2891x170x165	14.9	18.6
LTW081108	135"(81"x108")	2057	2743	45/40/40	2969x92x101	3196x170x165	17.2	20.0
LTW090120	150"(90"x120")	2286	3048	80/60/60	3314x92x101	3541x170x165	19.6	21.7
16:9 HDTV Format								
LTW040070	81"(40"x70")	1000	1778	450/30/30	1984x92x101	2211x170x165	11.6	14.5
LTW045080	92"(45"x80")	1143	2032	450/40/40	2258x92x101	2485x170x165	13.0	16.3
LTW049087	100"(49"x87")	1245	2210	450/40/40	2436x92x101	2663x170x165	14.0	17.4
LTW054096	110"(54"x96")	1372	2438	450/40/40	2664x92x101	2891x170x165	15.2	18.9
LTW059105	120"(59"x105")	1499	2667	450/40/40	2893x92x101	3120x170x165	16.9	19.4
LTW064113	130"(64"x113")	1626	2870	450/40/40	3096x92x101	3323x170x165	18.5	20.8
LTW068120	138"(68"x120")	1727	3048	450/60/60	3314x92x101	3541x170x165	19.9	22.0
LTW074131	150"(74"x131")	1880	3327	450/60/60	3593x92x101	3820x170x165	22.1	24.2
16:10 Wide Format								
LTW042067	80"(42"x67")	957	1702	450/30/30	1908x92x101	2135x170x165	11.2	14.0
LTW050080	94"(50"x80")	1270	2032	450/40/40	2258x92x101	2485x170x165	12.7	16.0
LTW053085	100"(53"x85")	1346	2159	450/40/40	2385x92x101	2612x170x165	13.5	16.9
LTW058093	110"(58"x93")	1473	2362	450/40/40	2588x92x101	2815x170x165	14.5	18.2
LTW064102	120"(64"x102")	1626	2591	450/40/40	2817x92x101	3044x170x165	16.2	18.7
LTW069110	130"(69"x110")	1753	2794	450/60/60	3060x92x101	3287x170x165	17.8	20.6
LTW074119	140"(74"x119")	1880	3023	450/60/60	3289x92x101	3516x170x165	19.6	21.7
LTW079127	150"(79"x127")	2007	3226	450/60/60	3492x92x101	3719x170x165	21.2	23.3

HERMES *PRO-LINE ELECTRIC SCREEN*

Vega Hermes series of motorized projection screen is the profession line. It is the perfect solution to the application in church, auditorium and other large venues.



UNIQUE APPEARANCE

Powder coated white hexagonal steel casing is durable and elegant.

SILENT TUBULAR MOTOR

Tubular motor is stable, energy efficient that ensure effective and smooth operation.

DURABLE

Make of high quality steel in hexagonal structure, offering high housing strength in preventing twist and bending due to motor and its own weight.

EASY INSTALLATION

Steel end caps with holes provides choices for wall or ceiling installation.



Specifications

Product Code	Screen Size (HxW, inches)	Viewing Area(mm) Height Width	Border(mm) Upper / Lower / Side	Product Dimension LxWxH(mm)	Packing Dimension LxWxH(mm)	N.W(kg)	G.W. (kg)
1:1 Square Format							
HTW050050	70"(50"x50")	1270 1270	45/30/30	1403x68x84	1658x150x135	5.3	6.2
HTW060060	84"(60"x60")	1524 1524	45/30/30	1657x68x84	1912x150x135	6.2	7.2
HTW070070	100"(70"x70")	1778 1778	45/30/30	1911x68x84	2166x150x135	7.2	8.3
HTW080080	113"(80"x80")	2032 2032	45/40/40	2209x96x130	2484x185x150	13.9	15.9
HTW096096	136"(96"x96")	2358 2358	45/40/40	2535x96x130	2810x185x150	16.0	18.3
HTW108108	153"(108"x108")	2743 2743	45/40/40	2920x96x130	3195x185x150	18.7	21.2
HTW120120	170"(120"x120")	3048 3048	80/60/60	3265x96x130	3540x185x150	21.2	24.0
HTW144144	204"(144"x144")	3658 3658	150/65/60	3875x114x148	4150x210x175	32.0	36.3
4:3 Video Format							
HTW050067	84"(50"x67")	1280 1707	40/30/30	1840x68x84	2095x150x135	6.5	7.6
HTW060080	100"(60"x80")	1524 2032	40/40/40	2209x96x130	2484x185x150	13.4	15.3
HTW072096	120"(72"x96")	1769 2358	40/40/40	2535x96x130	2810x185x150	15.3	17.5
HTW081108	135"(81"x108")	2057 2743	40/40/40	2920x96x130	3195x185x150	17.7	20.2
HTW090120	150"(90"x120")	2286 3048	80/60/60	3265x96x130	3540x185x150	20.0	22.8
HTW108144	180"(108"x144")	2743 3658	80/60/60	3875x96x130	4150x185x150	24.1	27.4
HTW120160	204"(120"x160")	3048 4064	80/60/60	4281x114x148	4556x210x175	35.5	40.1
16:9 HDTV Format							
HTW040070	81"(40"x70")	1000 1778	450/40/40	1955x96x130	2230x185x150	12.0	13.8
HTW045080	92"(45"x80")	1143 2032	450/40/40	2209x96x130	2484x185x150	13.4	15.4
HTW049087	100"(49"x87")	1243 2210	450/40/40	2387x96x130	2662x185x150	14.4	16.5
HTW054096	110"(54"x96")	1326 2358	450/40/40	2535x96x130	2810x185x150	15.2	17.5
HTW059105	120"(59"x105")	1500 2667	450/40/40	2844x96x130	3119x185x150	17.1	19.6
HTW064113	130"(64"x113")	1614 2870	450/40/40	3047x96x130	3322x185x150	16.8	19.4
HTW068120	138"(68"x120")	1715 3048	450/60/60	3265x96x130	3540x185x150	18.0	20.8
HTW074131	150"(74"x131")	1872 3327	450/60/60	3544x96x130	3819x185x150	19.6	22.7
HTW078140	160"(78"x140")	2000 3556	450/60/60	3773x96x130	4048x185x150	21.0	24.2
HTW090160	184"(90"x160")	2286 4064	450/60/60	4281x114x148	4556x210x175	34.5	39.1
16:10 Wide Format							
HTW042067	80"(42"x67")	1064 1702	450/40/40	1879x96x130	2154x185x150	11.7	13.4
HTW050080	94"(50"x80")	1270 2032	450/40/40	2209x96x130	2484x185x150	13.5	15.5
HTW053085	100"(53"x85")	1349 2159	450/40/40	2336x96x130	2611x185x150	14.2	16.3
HTW058093	110"(58"x93")	1476 2362	450/40/40	2539x96x130	2814x185x150	15.4	17.7
HTW064102	120"(64"x102")	1619 2591	450/40/40	2768x96x130	3043x185x150	16.9	19.3
HTW069110	130"(69"x110")	1746 2794	450/40/40	2971x96x130	3246x185x150	18.1	20.7
HTW074119	140"(74"x119")	1889 3023	450/40/40	3200x96x130	3475x185x150	17.9	20.7
HTW079127	150"(79"x127")	2016 3226	450/60/60	3443x96x130	3718x185x150	19.4	22.3

MANTO *PRO-LINE ELECTRIC SCREEN*

VEGA Manto series of motorized projection screen is our middle class which satisfies demanding end-users in terms of optical performance, appearance and functionality.



MANTO PRO-LINE ELECTRIC SCREEN



EASY INSTALLATION

Plastic end caps with holes provides choices for wall or ceiling installation.



SILENT TUBULAR MOTOR

Silent tubular motor is stable, energy efficient that ensure effective and smooth operation.



UNIQUE APPEARANCE

Square casing is special designed for interior design. Slat is totally hidden inside the casing when screen is retracted, which is perfect for false ceiling installation.



HIDDEN SLAT BAR

The triangular slat bar retracts into the case for a clean finish.



Specifications

Product Code	Screen Size (HxW, inches)	Viewing Area(mm) Height	Width	Border(mm) Upper / Lower / Side	Product Dimension LxWxH(mm)	Packing Dimension LxWxH(mm)	N.W(kg)	G.W. (kg)
1:1 Square Format								
MTW050050	70"(50"x50")	1270	1270	40/30/30	1426x67x75	1678x135x130	6.9	7.9
MTW060060	84"(60"x60")	1524	1524	40/30/30	1680x67x75	1932x135x130	8.1	9.2
MTW070070	100"(70"x70")	1778	1778	40/30/30	1934x67x75	2186x135x130	9.2	10.5
MTW080080	113"(80"x80")	2032	2032	45/40/40	2208x67x75	2460x135x130	10.6	12.0
MTW096096	136"(96"x96")	2358	2358	45/40/40	2534x67x75	2786x135x130	12.3	13.9
MTW108108	153"(108"x108")	2743	2743	80/60/60	2973x97x107	3225x163x155	19.5	21.6
MTW120120	170"(120"x120")	3048	3048	80/60/60	3278x97x107	3530x163x155	22.0	24.2
4:3 Video Format								
MTW050067	84"(50"x67")	1280	1707	40/30/30	1863x67x75	2115x135x130	8.5	9.7
MTW060080	100"(60"x80")	1524	2032	45/40/40	2208x67x75	2460x135x130	10.1	11.4
MTW072096	120"(72"x96")	1769	2358	45/40/40	2534x67x75	2786x135x130	11.6	13.1
MTW081108	135"(81"x108")	2057	2743	80/40/40	2933x97x107	3185x163x155	18.1	20.2
MTW090120	150"(90"x120")	2286	3048	80/60/60	3278x97x107	3530x163x155	20.5	22.8
16:9 HDTV Format								
MTW040070	81"(40"x70")	1000	1778	450/30/30	1934x67x75	2186x135x130	8.9	10.1
MTW045080	92"(45"x80")	1143	2032	450/40/40	2208x67x75	2460x135x130	10.1	11.5
MTW049087	100"(49"x87")	1243	2210	450/40/40	2386x67x75	2638x135x130	10.9	12.3
MTW054096	110"(54"x96")	1326	2358	450/40/40	2534x67x75	2786x135x130	11.5	13.1
MTW059105	120"(59"x105")	1500	2667	450/40/40	2843x75x83	3095x140x130	14.0	15.8
MTW064113	130"(64"x113")	1614	2870	450/40/40	3060x97x107	3312x163x155	18.7	20.8
MTW068120	138"(68"x120")	1715	3048	450/60/60	3278x97x107	3530x163x155	20.1	22.4
MTW074131	150"(74"x131")	1872	3327	450/60/60	3557x97x107	3809x163x155	22.0	24.5
16:10 Wide Format								
MTW042067	80"(42"x67")	1067	1707	450/30/30	1863x67x75	2115x135x130	9.4	10.6
MTW050080	94"(50"x80")	1270	2032	450/40/40	2208x67x75	2460x135x130	11.1	12.5
MTW053085	100"(53"x85")	1349	2159	450/40/40	2335x67x75	2587x135x130	11.7	13.2
MTW058093	110"(58"x93")	1474	2358	450/40/40	2534x67x75	2786x135x130	11.7	13.3
MTW064102	120"(64"x102")	1615	2585	450/40/40	2761x75x83	3013x140x130	13.9	15.6
MTW069110	130"(69"x110")	1746	2794	450/40/40	2970x97x107	3222x163x155	18.4	20.5
MTW074119	140"(74"x119")	1884	3015	450/60/60	3245x97x107	3497x163x155	20.3	22.5
MTW079127	150"(79"x127")	2019	3231	450/60/60	3461x97x107	3713x163x155	21.8	24.1

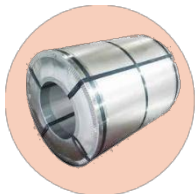
NEPTUNE *PRO-LINE ELECTRIC SCREEN*

VEGA Neptune series of motorized projection screen is our middle class which satisfies demanding end-users in terms of optical performance, appearance and functionality.



UNIQUE APPEARANCE

Special tooling for unique Semi-circular casing. Coated with white powder make it differentiates from other standard product in the market.



DURABLE

Galvanized steel casing with reinforced ribs, keeping the casing straight against the torque from motor.



SILENT TUBULAR MOTOR

Tubular motor is stable, energy efficient that ensure effective and smooth operation.



IN-LINE SWITCH

In-line control switch makes provide simplest operation.



Specifications

Product Code	Screen Size (HxW, inches)	Viewing Area(mm) Height Width	Border(mm) Upper / Lower / Side	Product Dimension LxWxH(mm)	Packing Dimension LxWxH(mm)	N.W(kg)	G.W. (kg)
1:1 Square Format							
NTW050050	70"(50"x50")	1270 1270	40/30/30	1399X82X93	1684X140X130	6.1	6.9
NTW060060	84"(60"x60")	1524 1524	40/30/30	1653X82X93	1938X140X130	7.0	8.0
NTW070070	100"(70"x70")	1778 1778	40/30/30	1907X82X93	2192X140X130	8.0	9.1
NTW080080	113"(80"x80")	2032 2032	45/40/40	2181X82X93	2466X140X130	9.1	10.3
NTW096096	136"(96"x96")	2358 2358	45/40/40	2507X82X93	2792X140X130	10.6	12.0
NTW108108	153"(108"x108")	2743 2743	80/60/60	2954X89X110	3261X175X155	14.9	16.8
4:3 Video Format							
NTW050067	84"(50"x67")	1280 1707	40/30/30	1836X82X93	2121X140X130	7.3	8.4
NTW060080	100"(60"x80")	1524 2032	45/40/40	2181X82X93	2466X140X130	8.6	9.8
NTW072096	120"(72"x96")	1769 2358	45/40/40	2507X82X93	2792X140X130	9.9	11.2
NTW081108	135"(81"x108")	2057 2743	45/40/40	2932X82X93	3217X145X135	11.7	13.3
NTW090120	150"(90"x120")	2286 3048	80/60/60	3237X82X93	3522X140X130	13.1	14.8
16:9 HDTV Format							
NTW040070	81"(40"x70")	1000 1778	475/40/40	1907X82X93	2192X140X130	7.7	8.7
NTW045080	92"(45"x80")	1143 2032	430/40/40	2181X82X93	2466X140X130	8.6	9.8
NTW049087	100"(49"x87")	1243 2210	475/40/40	2359X82X93	2644X140X130	9.3	10.6
NTW054096	110"(54"x96")	1326 2358	430/40/40	2507X82X93	2792X140X130	9.8	11.2
NTW059105	120"(59"x105")	1500 2667	430/40/40	2816X82X93	3010X140X130	11.0	12.5
NTW064113	130"(64"x113")	1614 2870	430/40/40	3019X82X93	3304X140X130	11.9	13.5
NTW068120	138"(68"x120")	1715 3048	430/60/60	3237X82X93	3522X140X130	12.8	14.5
16:10 Wide Format							
NTW042067	80"(42"x67")	1064 1702	430/40/40	1831X82X93	2116X140X130	7.5	8.5
NTW050080	94"(50"x80")	1270 2032	430/40/40	2181X82X93	2466X140X130	8.8	10.0
NTW053085	100"(53"x85")	1349 2159	430/40/40	2308X82X93	2593X140X130	9.3	10.5
NTW058093	110"(58"x93")	1474 2358	430/40/40	2507X82X93	2792X140X130	10.0	11.4
NTW064102	120"(64"x102")	1619 2591	430/60/60	2740X82X93	3025X140X130	11.0	12.4
NTW069110	130"(69"x110")	1746 2794	430/60/60	2943X82X93	3228X140X130	11.8	13.4
NTW074119	140"(74"x119")	1889 3023	430/60/60	3212X82X93	3497X140X130	12.2	13.9

NEPTUNE *ECO-LINE ELECTRIC SCREEN*

Neptune series of motorized projection screen is the best option for a budget motorized screen. It is suitable for most applications from education to commercial presentations.



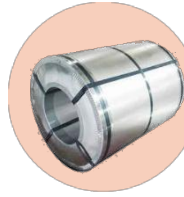
UNIQUE APPEARANCE

Special tooling for unique Semi-circular casing. Coated with white powder make it differentiates from other standard product in the market.



SYNCHRONIZED MOTOR

Synchronized motor is silent that provides quiet and pleasant operation.



DURABLE

Galvanized steel casing with reinforced ribs, keeping the casing straight against the torque from motor.



LIMITED SWITCH

Individual limited switch provides precise position adjustment for both upper and lower limit.



Specifications

Product Code	Screen Size (HxW, inches)	Viewing Area(mm) Height Width	Border(mm) Upper / Lower / Side	Product Dimension LxWxH(mm)	Packing Dimension LxWxH(mm)	N.W(kg)	G.W. (kg)
1:1 Square Format							
NSW050050	70"(50"x50")	1270 1270	40/30/30	1545x82x93	1830x140x130	5.2	6.2
NSW060060	84"(60"x60")	1524 1524	40/30/30	1799x82x93	2084x140x130	6.2	7.3
NSW070070	100"(70"x70")	1778 1778	40/30/30	2053x82x93	2338x140x130	7.2	8.4
NSW080080	113"(80"x80")	2032 2032	45/40/40	2327x82x93	2612x140x130	8.3	9.7
NSW096096	136"(96"x96")	2358 2358	45/40/40	2653x82x93	2938x140x130	9.8	11.3
NSW108108	153"(108"x108")	2743 2743	80/60/60	3078x82x93	3363x140x130	11.9	13.6
4:3 Video Format							
NSW050067	84"(50"x67")	1280 1707	40/30/30	1982x82x93	2267x140x130	6.5	7.7
NSW060080	100"(60"x80")	1524 2032	45/40/40	2327x82x93	2612x140x130	7.8	9.1
NSW072096	120"(72"x96")	1769 2358	45/40/40	2653x82x93	2938x140x130	9.0	10.6
NSW081108	135"(81"x108")	2057 2743	45/40/40	3038x82x93	3323x140x130	10.6	12.3
NSW090120	150"(90"x120")	2286 3048	80/60/60	3383x82x93	3668x140x130	12.2	14.1
16:9 HDTV Format							
NSW040070	81"(40"x70")	1000 1778	475/40/40	2073x82x93	2358x140x130	6.9	8.2
NSW045080	92"(45"x80")	1143 2032	430/40/40	2327x82x93	2612x140x130	7.8	9.2
NSW049087	100"(49"x87")	1243 2210	475/40/40	2505x82x93	2790x140x130	8.5	9.9
NSW054096	110"(54"x96")	1326 2358	430/40/40	2653x82x93	2938x140x130	9.0	10.5
NSW059105	120"(59"x105")	1500 2667	430/40/40	2962x82x93	3247x140x130	10.2	11.8
NSW064113	130"(64"x113")	1614 2870	430/40/40	3165x82x93	3450x140x130	11.0	12.8
NSW068120	138"(68"x120")	1715 3048	430/60/60	3383x82x93	3668x140x130	11.9	13.8
16:10 Wide Format							
NSW042067	80"(42"x67")	1064 1702	430/40/40	1997x82x93	2282x140x130	6.7	7.9
NSW050080	94"(50"x80")	1270 2032	430/40/40	2327x82x93	2612x140x130	7.9	9.3
NSW053085	100"(53"x85")	1349 2159	430/40/40	2454x82x93	2739x140x130	8.4	9.8
NSW058093	110"(58"x93")	1474 2358	430/40/40	2653x82x93	2938x140x130	9.1	10.7
NSW064102	120"(64"x102")	1619 2591	430/60/60	2926x82x93	3211x140x130	10.2	11.9
NSW069110	130"(69"x110")	1746 2794	430/60/60	3129x82x93	3414x140x130	11.1	12.9
NSW074119	140"(74"x119")	1889 3023	430/60/60	3358x82x93	3643x140x130	12.1	14.0

ATHENA *ECO-LINE ELECTRIC SCREEN*

Vega ATHENA eco-line electric screen is the best budget choice for office presentation or education purpose. It is the most competitive one to go with tenders or government project.



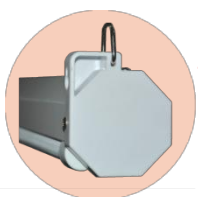
ENVIRONMENTAL FREINDLY

The housing is made of pre-painted steel sheet by special extrusion tooling, eliminating the environmental impact of powder coating.



SILENT OPERATION

Synchronized motor is silent that provides quiet and pleasant operation.



EASY INSTALLATION

Wall mounting or ceiling hanging are available, which suit for most of installation environment.



Specifications								
Product Code	Screen Size (HxW, inches)	Viewing Area(mm)		Border(mm) Upper / Lower / Side	Product Dimension LxWxH(mm)	Packing Dimension LxWxH(mm)	N.W. (kg)	G.W. (kg)
1:1 Square Format								
BSW070070	100"(70"x70")	1778	1778	40/30/30	1953x80x108	1999x140x130	8.2	9.5
BSW080080	113"(80"x80")	2032	2032	40/40/40	2227x80x108	2273x140x130	9.5	10.9
BSW087087	123"(87"x87")	2210	2210	40/40/40	2405x80x108	2451x140x130	10.3	11.8
BSW096096	136"(96"x96")	2358	2358	40/40/40	2553x80x108	2599x140x130	11.4	13.1
4:3 Video Format								
BSW052070	87"(52"x70")	1334	1778	40/30/30	1953x80x108	1999x140x130	7.8	9.1
BSW060080	100"(60"x80")	1524	2032	40/40/40	2227x80x108	2273x140x130	8.9	10.3
BSW065087	109"(65"x87")	1657	2210	40/40/40	2405x80x108	2451x140x130	9.7	11.2
BSW072096	120"(72"x96")	1769	2358	40/40/40	2553x80x108	2599x140x130	10.7	12.3
16:9 HDTV Format								
BSW039070	80"(39"x70")	1000	1778	300/30/30	1953x80x108	1999x140x130	7.8	9.0
BSW045080	92"(45"x80")	1143	2032	300/40/40	2227x80x108	2273x140x130	8.8	10.2
BSW049087	100"(49"x87")	1243	2210	300/40/40	2405x80x108	2451x140x130	9.5	11.0
BSW054096	110"(54"x96")	1372	2438	300/40/40	2553x80x108	2599x140x130	10.4	12.1
BSW059105	120"(59"x105")	1499	2667	300/40/40	2943x80x108	2989x140x130	11.4	13.2

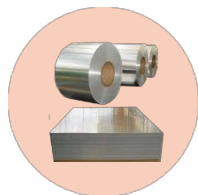
CERES *ECO-LINE ELECTRIC SCREEN*

Vega CERES eco-line electric screen is the best budget choice for office presentation or education purpose. It is the most competitive one to go with tenders or government project.



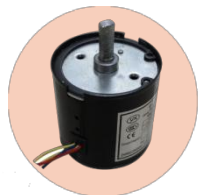
MATTE WHITE FABRIC

Multi-purpose matte white fabric offering gain factor at 1.0 with 110 degree viewing angle.



DURABLE

Made of galvanized steel, the housing is ultimate rigid and stand straight under any circumstances.



SILENT OPERATION

Synchronized motor is silent that provides quiet and pleasant operation.



EASY INSTALLATION

Wall mounting or ceiling hanging are available, which suit for most of installation environment.



LIMITED SWITCH

Individual limited switch provides precise position adjustment for both upper and lower limit.



Specifications								
Product Code	Screen Size (HxW, inches)	Viewing Area(mm)		Border(mm)	Product Dimension	Packing Dimension	N.W. (kg)	G.W. (kg)
		Height	Width	Upper / Lower / Side	LxWxH(mm)	LxWxH(mm)		
1:1 Square Format								
CSW060060	60"x60" (85")	1524	1524	50/30/30	1770x82x110	1830x130x160	6.4	7.4
CSW070070	70"x70" (99")	1778	1778	50/30/30	2030x82x110	2090x130x160	7.9	8.9
CSW080080	80"x80" (113")	2032	2032	50/40/40	2302x82x110	2362x130x160	9.5	10.5
CSW096096	96"x96" (136")	2438	2438	50/40/40	2708x82x110	2808x130x160	10.5	12.0
4:3 Video Format								
CSW050067	50"x67" (84")	1280	1707	50/40/40	1980x82x110	2040x130x160	6.5	7.6
CSW060080	60"x80" (100")	1524	2032	50/40/40	2300x82x110	2360x130x160	8.0	9.8
CSW072096	72"x96" (120")	1829	2438	50/40/40	2710x82x110	2770x130x160	11.6	14.5
16:9 HDTV Format								
CSW045080	45"x80" (92")	1143	2032	300/40/40	2302x82x110	2402x130x160	7.3	8.3
CSW049087	49"x87" (100")	1245	2210	300/40/40	2480x82x110	2580x130x160	9.5	10.5
CSW052092	52"x92" (106")	1321	2337	300/40/40	2607x82x110	2707x130x160	10.0	11.0
CSW054096	54"x96" (110")	1372	2438	300/40/40	2708x82x110	2808x130x160	10.5	11.5

GIANT TENSION ENGINEERING ELECTRIC SCREEN

Engineering grade giant tab-tensioned electric screen with heavy duty motor is the best choice for projection at stage, hall, lecture theater with the overall flatness.



TAB TENSIONED

Incorporated with elastic fabric and weighted slat bar, the tab tensioned system offer the best flatness among all rolling type electric screens.



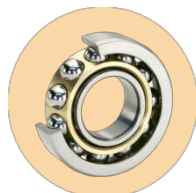
DURABLE

Make of high quality steel in hexagonal structure, offering high housing strength in preventing twist and bending due to motor and its own weight.



WOODEN BOX

For better protection against the risk in transportation for either container or LCL shipment, wooden box will be provided upon customer request.



BEARING SUPPORT

High quality ball bearing is being used to support the roller. It reduces noise during operation and significantly enhance the product lifetime.



HEAVY DUTY MOTOR

Large scale tubular motor delivers sufficient torque and stability to sustain the weight of roller and fabric. Built-in thermal overload cutout is integrated for extra safety protection.



IN-LINE SWITCH

In-line control switch offers the simplest operation.



Specifications

Product Code	Screen Size (HxW, inches)	Viewing Area(mm) Height Width	Border(mm) Upper / Lower / Side	Product Dimension LxWxH(mm)	Packing Dimension LxWxH(mm)	N.W(kg)	G.W. (kg)
1:1 Square Format							
GTE144144	204"(144"x144")	3657 3657	0/50/50	3900x125x200	3960x180x250	60.0	70.0
GTE168168	238"(168"x168")	4267 4267	0/50/50	4510x125x200	4570x180x250	80.0	90.0
GTE192192	271"(192"x192")	4876 4876	0/50/50	5140x165x220	5250x210x270	100.0	110.0
4:3 Video Format							
GTE150200	250"(150"x200")	3810 5080	50/50/50	5580x165x220	5630x210x270	60.0	70.0
GTE180240	300"(180"x240")	4572 6096	50/50/50	6596x200x260	6646x250x310	80.0	90.0
GTE210280	350"(210"x280")	5334 7112	50/50/50	7850x220x350	7900x270x400	100.0	110.0
GTE240320	400"(240"x320")	6096 8218	50/50/50	8850x220x350	8900x270x400	120.0	130.0
16:9 HDTV Format							
GTE122218	250"(122"x218")	3099 5537	300/50/50	6000x165x220	6050x210x270	60.0	70.0
GTE147261	300"(147"x261")	3734 6629	300/50/50	7130x200x260	7180x250x310	80.0	90.0
GTE171305	350"(171"x305")	4343 7747	300/50/50	8470x220x350	8520x270x400	100.0	110.0
GTE196348	400"(196"x348")	4978 8839	300/50/50	9580x250x350	9630x300x400	120.0	130.0

Engineering grade giant electric screen with heavy duty motor is the best choice for projection at stage, hall, lecture theater.



DURABLE

Make of high quality steel in hexagonal structure, offering high housing strength in preventing twist and bending due to motor and its own weight.



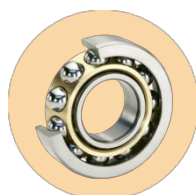
WOODEN BOX

For better protection against the risk in transportation for either container or LCL shipment, wooden box will be provided upon customer request.



HEAVY DUTY MOTOR

Large scale tubular motor delivers sufficient torque and stability to sustain the weight of roller and fabric. Built-in thermal overload cutout is integrated for extra safety protection.



BEARING SUPPORT

High quality ball bearing is being used to support the roller. It reduces noise during operation and significantly enhance the product lifetime.



IN-LINE SWITCH

In-line control switch offers the simplest operation.

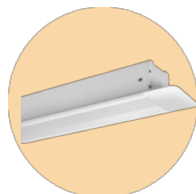


Specifications

Product Code	Screen Size (HxW, inches)	Viewing Area(mm)		Border(mm)	Product Dimension LxWxH(mm)	Packing Dimension LxWxH(mm)	N.W(kg)	G.W. (kg)
		Height	Width	Upper / Lower / Side				
4:3 Video Format								
GTW150200	250"(150"x200")	3810	5080	50/50/50	5380x165x220	5430x210x270	50.0	60.0
GTW180240	300"(180"x240")	4572	6096	50/50/50	6396x200x260	6446x250x310	70.0	80.0
GTW210280	350"(210"x280")	5334	7112	50/50/50	7650x220x350	7700x270x400	90.0	100.0
GTW240320	400"(240"x320")	6096	8218	50/50/50	8650x220x350	8700x270x400	110.0	120.0
16:9 HDTV Format								
GTW122218	250"(122"x218")	3099	5537	300/50/50	5800x165x220	5850x210x270	50.0	60.0
GTW147261	300"(147"x261")	3734	6629	300/50/50	6930x200x260	6980x250x310	70.0	80.0
GTW171305	350"(171"x305")	4343	7747	300/50/50	8270x220x350	8320x270x400	90.0	100.0
GTW196348	400"(196"x348")	4978	8839	300/50/50	9380x250x350	9430x300x400	110.0	120.0

PREMIUM IN-CEILING *ELECTRIC SCREEN*

Vega' s in-ceiling screen is the best choice of screen to integrate into interior design. With the compact but rigid housing, you can now hide the entire screen body inside the false ceiling with limited spaces.



ELEGANT

T6063 one piece Aluminum profiled housing with Piano white finishing. Special internal ribs design helps to minimize vibration, as well as the noise during operation.



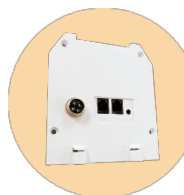
INSTALLATION FRIENDLY

Full installation kit set including detachable access panel, mounting bracket, anchor rods ... etc. are all included.



STABLE, SILENT & SAFE

Powered by tubular motor with thermal overload cut-out device



TOTAL CONTROL

Integrated with built-in RF, IR, 12V trigger and programmable control interface.

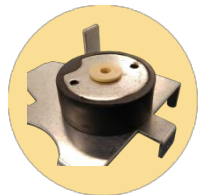


Specifications

Product Code	Screen Size (HxW, inches)	Viewing Area(mm)		Border(mm) Upper / Lower / Side	Product Dimension LxWxH(mm)	Packing Dimension LxWxH(mm)	N.W(kg)	G.W. (kg)
		Height	Width					
1:1 Square Format								
KTW070070	100"(70"x70")	1778	1778	45/30/30	2004x135x109	2089x193x162	10.2	13.2
KTW080080	113"(80"x80")	2032	2032	45/40/40	2278x135x109	2363x193x162	11.5	14.7
KTW096096	136"(96"x96")	2438	2438	45/40/40	2684x135x109	2769x193x162	13.7	17.1
KTW108108	153"(108"x108")	2743	2743	80/60/60	3067x160x125	3138x222x187	22.4	25.3
4:3 Video Format								
KTW050067	84"(50"x67")	1276	1702	450/30/30	1928x135x109	2013x193x162	9.8	12.7
KTW060080	100"(60"x80")	1524	2032	450/40/40	2278x135x109	2363x193x162	11.4	14.6
KTW072096	120"(72"x96")	1829	2438	450/40/40	2684x135x109	2769x193x162	13.5	16.9
KTW081108	135"(81"x108")	2057	2743	450/60/60	3067x160x125	3138x222x187	21.9	24.8
KTW090120	150"(90"x120")	2286	3048	450/60/60	3372x160x125	3443x222x187	24.2	27.2
16:9 HDTV Format								
KTW040070	87"(40"x70")	1000	1778	600/30/30	2004x135x109	2089x193x162	10.0	13.0
KTW045080	92"(45"x80")	1143	2032	600/40/40	2278x135x109	2363x193x162	11.6	14.4
KTW049087	100"(49"x87")	1243	2210	600/40/40	2456x135x109	2541x193x162	12.0	15.3
KTW054096	110"(54"x96")	1372	2438	600/40/40	2684x135x109	2769x193x162	13.1	16.5
KTW059105	120"(59"x105")	1500	2667	600/40/40	2913x135x109	2998x193x162	14.2	17.8
KTW064113	130"(64"x113")	1614	2870	600/60/60	3194x160x125	3265x222x187	22.1	25.1
KTW074131	150"(74"x131")	1872	3327	600/60/60	3651x160x125	3722x222x187	25.3	28.6
16:10 Wide Format								
KTW042067	80"(42"x67")	1064	1702	600/30/30	1928x135x109	2013x193x162	9.7	12.7
KTW050080	94"(50"x80")	1270	2032	600/40/40	2278x135x109	2363x193x162	11.3	14.5
KTW060096	113"(60"x96")	1524	2438	600/40/40	2684x135x109	2769x193x162	13.3	16.7
KTW064102	120"(64"x102")	1619	2591	600/40/40	2837x135x109	2922x193x162	14.1	17.6
KTW068109	128"(68"x109")	1730	2769	600/60/60	3093x160x125	3164x222x187	21.7	24.6
KTW075120	141"(75"x120")	1905	3048	600/60/60	3372x160x125	3443x222x187	23.7	26.8
KTW079127	150"(79"x127")	2016	3226	600/60/60	3550x160x125	3621x222x187	25.0	28.2

PREMIUM TAB-TENSIONED SCREEN

It is a great choice for home theatre with variety control possibilities. By using a large size roller with tab-tensioned system, it provides the best flatness, offering minimum image distortion.



SHOCK ABSORPTION

High density rubber offer reliable support with ultimate shock absorption to minimize operational noise.



ELEGANT APPEARANCE

The aluminum alloy extruded frame with white powder coating.



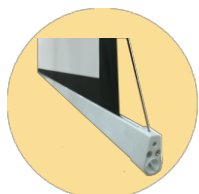
TOTAL CONTROL

Integrated with built-in RF, IR, 12V trigger and programmable control interface.



DETACHABLE BRACKET

Specific "L" shape bracket with spring lock, simplifying the installation process. Either ceiling mounting, wall mount or ceiling hanging are possible.



TAB TENSIONED

Incorporated with elastic fabric and weighted slat bar, the tab tensioned system offer the best flatness among all rolling type electric screens.



SILENT & SAFE

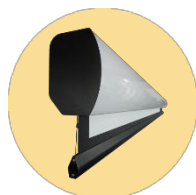
Heavy-duty silent motor with integrated shock absorber and thermal overload cutout.



Specifications								
Product Code	Screen Size (HxW, inches)	Viewing Area(mm) Height Width	Border(mm) Upper / Lower / Side	Product Dimension LxWxH(mm)	Packing Dimension LxWxH(mm)	N.W(kg)	G.W. (kg)	
4:3 Video Format								
CTS050067	84"(50"x67")	1280 1707	250 / 50 / 40	2057x104x154	2205x205x155	15.3	17.0	
CTS055074	92"(55"x74")	1402 1869	250 / 50 / 40	2219x104x154	2367x205x155	16.4	18.3	
CTS060080	100"(60"x80")	1524 2032	250 / 50 / 40	2382x104x154	2530x205x155	17.6	19.6	
CTS072096	120"(72"x96")	1829 2438	250 / 50 / 40	2788x104x154	2936x205x155	20.6	22.9	
CTS090120	150"(90"x120")	2286 3048	250 / 50 / 40	3398x104x154	3546x205x155	25.8	29.3	
16:9 HDTV Format								
CTS041073	84"(41"x73")	1042 1854	400 / 50 / 40	2204x104x154	2352x205x155	16.1	17.9	
CTS045080	92"(45"x80")	1143 2032	400 / 50 / 40	2382x104x154	2530x205x155	17.3	19.3	
CTS049087	100"(49"x87")	1245 2210	400 / 50 / 40	2560x104x154	2708x205x155	18.6	20.7	
CTS054096	110"(54"x96")	1372 2438	400 / 50 / 40	2788x104x154	2936x205x155	20.2	22.5	
CTS059105	120"(59"x105")	1499 2667	400 / 50 / 40	3017x104x154	3165x205x155	21.9	24.4	
CTS064113	130"(64"x113")	1614 2870	400 / 50 / 40	3220x104x154	3368x205x158	24.2	27.3	
CTS066118	135"(66"x118")	1686 2997	400 / 50 / 40	3347x104x154	3495x205x156	25.3	28.5	
CTS074131	150"(74"x131")	1880 3327	400 / 50 / 40	3677x104x154	3825x205x156	28.1	31.3	
16:10 Wide Format								
CTS042068	80"(42"x68")	1075 1720	400 / 50 / 40	2070x104x154	2218x205x155	15.3	17.0	
CTS053085	100"(53"x85")	1345 2153	400 / 50 / 40	2503x104x154	2651x205x155	18.4	20.1	
CTS064102	120"(64"x102")	1615 2583	400 / 50 / 40	2933x104x154	3081x205x155	21.5	24.0	
CTS074119	140"(74"x119")	1889 3023	400 / 50 / 40	3543x104x154	3691x205x156	25.6	29.3	

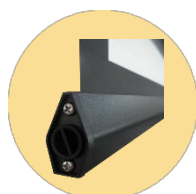
SUPREME TAB-TENSIONED SCREEN

Supreme Tab-tensioned series of projection screens is one of the best choices for home theater, especially for those having panel for other application. By using a large size roller with tab-tensioned system, it provides the best flatness, offering minimum image distortion.



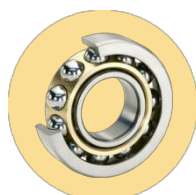
ELEGANT APPEARANCE

The aluminum alloy extruded frame with glossy white powder coating.



TAB TENSIONED

Incorporated with elastic fabric and weighted slat bar, the tab tensioned system offer the best flatness among all rolling type electric screens.



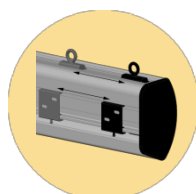
BEARING SUPPORT

Ball bearing ensure reliable support and smooth operation.



SILENT

Heavy-duty silent motor with integrated shock absorber



DETACHABLE MOUNTING BRACKET

Detachable mounting bracket allow installer to hang on the screen without the help of others. User can fine tune the center line of screen with the projector after installation through the sliding rack structure.



Specifications

Product Code	Screen Size (HxW, inches)	Viewing Area(mm)		Border(mm)	Product Dimension LxWxH(mm)	Packing Dimension LxWxH(mm)	G.W. (kg)
		Height	Width	Upper / Lower / Side			
4:3 Video Format							
STS050067	84"(50"x67")	1280	1710	100 / 60 / 40-50	2060x110x160	2180x220x170	15.0
STS060080	100"(60"x80")	1520	2030	100 / 60 / 40-50	2380x110x160	2500x220x170	17.0
STS072096	120"(72"x96")	1830	2440	100 / 60 / 40-50	2790x110x160	2910x220x170	19.0
STS090120	150"(90"x120")	2280	3050	100 / 60 / 40-50	3400x110x160	3520x220x170	22.0
16:9 HDTV Format							
STS041073	84"(41"x73")	1040	1850	600 / 60 / 40-50	2210x110x160	2310x220x170	15.0
STS045080	92"(45"x80")	1140	2030	600 / 60 / 40-50	2390x110x160	2510x220x170	17.0
STS049087	100"(49"x87")	1240	2210	500 / 60 / 40-50	2560x110x160	2680x220x170	19.0
STS052092	106"(52"x92")	1320	2340	500 / 60 / 40-50	2700x110x160	2940x220x170	20.0
STS059105	120"(59"x105")	1490	2650	300 / 60 / 40-50	3010x110x160	3130x220x170	21.0
STS065116	133"(65"x116")	1650	2940	300 / 60 / 40-50	3300x110x160	3420x220x170	22.0
STS074131	150"(74"x131")	1870	3320	300 / 60 / 40-50	3670x110x160	3790x220x170	25.0
STS088157	180"(88"x157")	2240	3980	300 / 60 / 40-50	4340x110x160	4460x220x170	30.0
STS098174	200"(98"x174")	2400	4430	300 / 60 / 40-50	4790x110x160	4960x220x170	35.0
2.35:1 Cinema Format							
STS039092	100"(39"x92")	1000	2340	500 / 60 / 40-50	2690x110x160	2810x220x170	19.0
STS047110	120"(47"x110")	1200	2810	300 / 60 / 40-50	3160x110x160	3280x220x170	21.0
STS052122	133"(52"x122")	1320	3110	300 / 60 / 40-50	3460x110x160	3580x220x170	22.0
STS059138	150"(59"x138")	1490	3510	300 / 60 / 40-50	3860x110x160	3980x220x170	25.0
STS070166	180"(70"x166")	1790	4210	300 / 60 / 40-50	4560x110x160	4680x220x170	30.0

HERMES *TAB-TENSIONED SCREEN*

Vega Hermes Tab Tensioned Screen is a perfect addition to your home theater. It features a tab tensioning system to create a flatter viewing surface than a regular motorized screen. Its outstanding picture quality will optimize your cinema-like viewing experience at home.



TAB TENSIONED

Incorporated with elastic fabric and weighted slat bar, the tab tensioned system offer the best flatness among all rolling type electric screens.

DURABLE

Make of high quality steel in hexagonal structure, offering high housing strength in preventing twist and bending due to motor and its own weight

TUBULAR MOTOR

Tubular motor is stable, energy efficient that ensure effective and smooth operation.

EASY INSTALLATION

Steel end caps with holes provides choices for wall or ceiling installation.



Specifications

Product Code	Screen Size (HxW, inches)	Viewing Area(mm)		Border(mm)	Product Dimension LxWxH(mm)	Packing Dimension LxWxH(mm)	N.W(kg)	G.W. (kg)
		Height	Width	Upper / Lower / Side				
4:3 Video Format								
HTS050067	84"(50"x67")	1280	1707	250 / 50 / 40-95	2099x96x130	2311x203x170	17.2	19.0
HTS055074	92"(55"x74")	1402	1869	250 / 50 / 40-95	2311x96x130	2523x203x170	18.7	20.7
HTS060080	100"(60"x80")	1524	2032	250 / 50 / 40-95	2460x96x130	2672x203x170	20.1	22.2
HTS072096	120"(72"x96")	1829	2438	250 / 50 / 40-110	2966x96x130	3178x203x170	23.8	26.3
HTS090120	150"(90"x120")	2286	3048	250 / 50 / 40-112	3568x96x130	3780x203x170	29.7	33.3
16:9 HDTV Format								
HTS041073	84"(41"x73")	1042	1854	400 / 50 / 40-82	2227x96x130	2439x203x170	18.0	20.0
HTS045080	92"(45"x80")	1143	2032	400 / 50 / 40-84	2426x96x130	2638x203x170	19.5	21.6
HTS049087	100"(49"x87")	1245	2210	400 / 50 / 40-90	2619x96x130	2831x203x170	21.1	23.3
HTS054096	110"(54"x96")	1372	2438	400 / 50 / 40-91	2844x96x130	3056x203x170	22.8	25.2
HTS059105	120"(59"x105")	1499	2667	400 / 50 / 40-91	3096x96x130	3308x203x170	24.8	27.4
HTS064113	130"(64"x113")	1614	2870	400 / 50 / 40-95	3308x96x130	3520x203x170	26.2	29.6
HTS066118	135"(66"x118")	1686	2997	400 / 50 / 40-97	3438x96x130	3650x203x170	28.7	32.3
HTS074131	150"(74"x131")	1880	3327	400 / 50 / 40-112	3769x96x130	3981x203x170	32.5	36.0
16:10 Wide Format								
HTS045071	84"(45"x71")	1143	1829	400 / 50 / 40-84	2178x96x130	2390x203x170	18.0	19.9
HTS060096	113"(60"x96")	1524	2438	400 / 50 / 40-97	2873x96x130	3085x203x170	23.3	25.7
HTS064102	120"(64"x102")	1615	2583	400 / 50 / 40-99	3023x96x130	3235x203x170	24.1	26.6
HTS069110	130"(69"x110")	1746	2794	400 / 50 / 40-103	3242x96x130	3454x203x170	25.4	28.6
HTS075120	142"(75"x120")	1905	3048	400 / 50 / 40-108	3568x96x130	3780x203x170	29.7	33.3

HOMEMAX *CURVED FIXED FRAME SCREEN*

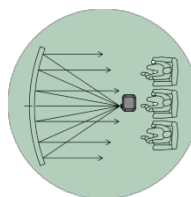
A curved projection screen plays a valuable role in today's home theaters. HomeMax series of curved fixed frame screen brings the full movie experience into your homes.



3D ENHANCED PROJECTION SILVER FABRIC



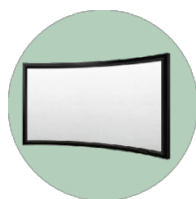
High gain and high contrast 3D fabric enhances projected images that can truly inspire and entertain audience.



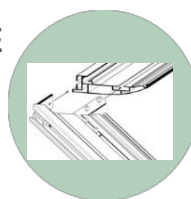
BEST BRIGHTNESS AND UNIFORMITY

A curved screen allows the light to travel the same distance to any other point on the screen as it does to the center. This results in a "uniform" and "brighter" image that is free from distortion.

CINEMASCOPE APPEARANCE



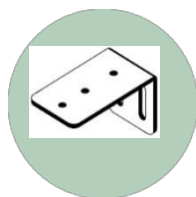
It has an aesthetic appeal that provides a central focus at the ultimate format for home theatre room.



RIGID STRUCTURE

Insert type joint is applied to the entire frame, so the surface is perfectly flat.

HASSLE-FREE INSTALLATION



Complete set of installation mounts are including in accessory kit for easy and quick installation.



MOST REALISTIC IMAGE

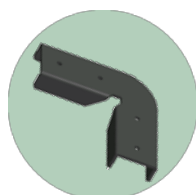
A curved screen helps offset pincushion distortion from a horizontal expansion lens, and also wraps the image around your periphery more than a flat screen for greater engagement with your projected image.

Specification

Product Code	Viewing Area (HxW, inches)	Viewing Area(mm) Height	Width	Packing Dimension LxWxH(mm)	Frame Size (mm)	G.W. (kg)
4:3 Video Format						
HX100V8	100"(60"x80")	1520	2030	2310x220x140	80	10.0
HX120V8	115"(69"x92")	1830	2440	2720x220x140	80	12.0
HX150V10	145"(87"x116")	2290	3050	3370x220x140	100	16.0
HX180V10	180"(108"x144")	2750	3660	3980x220x140	100	18.0
16:9 HDTV Format						
HX92W8	92"(45"x80")	1140	2030	2250x200x140	80	10.0
HX100W8	100"(49"x87")	1240	2210	2490x220x140	80	12.0
HX106W8	106"(52"x92")	1320	2340	2620x220x140	80	13.0
HX120W8	120"(59"x105")	1490	2650	2940x220x140	80	14.0
HX133W10	133"(65"x116")	1650	2940	3230x220x140	100	15.0
HX150W10	150"(74"x131")	1870	3320	3640x220x140	100	16.0
HX180W10	180"(88"x157")	2240	3980	4310x220x140	100	18.0
2.35:1 Wide TV Format						
HX100C8	100"(39"x92")	1000	2340	2620x220x140	80	12.0
HX120C8	120"(47"x111")	1200	2810	3090x220x140	80	14.0
HX133C10	133"(52"x122")	1320	3110	3390x220x140	100	13.0
HX150C10	150"(57"x138")	1490	3510	3830x220x140	100	16.0
HX180C10	180"(70"x166")	1790	4210	4530x220x140	100	18.0

PANELFRAME MKII FIXED FRAME SCREEN

Fixed frame screen is suitable for video projection which provides a contemporary, theatre-like appearance. Vega's new PanelFrame Fixed Frame series has an ultra-slim frame just 12mm wide, thereby gives a profession look and giant LED TV feelings to audience. Making transportation to the installation easier, especially when dealing with stairs, elevators and corners. Assembles easily on site.



RIGID STRUCTURE

Insert type joint is applied to the entire frame, so the surface is perfectly flat.



FULL TIME TENSION

Equipped with spring tensioned mechanism, tensile force around the fabrics is evenly distributed, which offer the best flatness for ultimate projection effect.



NARROW FRAME

Innovative design with frame size at 12mm only, make the screen into TV panel style. Corner protector is provided in MKII which offer better protection to the frame, as well as the users.

Specifications

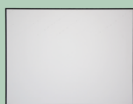
Product Code	Screen Size (HxW, inches)	Viewing Area(mm)		Frame Size (mm)	Packing Dimension LxWxH(mm)	N.W. (kg)	G.W. (kg)
		Height	Width				
16:9 HDTV Format							
PF2045080	92"(45"x80")	1145	2036	12	2350*270*120	12.1	13.6
PF2049087	100"(49"x87")	1245	2213	12	2490*270*120	13.5	15.0
PF2054096	110"(54"x96")	1375	2442	12	2610*270*120	13.9	15.4
PF2059104	120"(59"x104")	1494	2656	12	2840*270*120	15.7	17.2
PF2064113	130"(64"x113")	1619	2877	12	3050*270*120	18.0	19.5
PF2069122	140"(69"x122")	1743	3099	12	3270*270*120	20.0	21.5

PANELFRAME FIXED FRAME SCREEN

Fixed frame screen is suitable for video projection which provides a contemporary, theatre-like appearance. Vega's new PanelFrame Fixed Frame series has an ultra-slim frame just 18mm wide, thereby gives a professional look and giant LED TV feelings to audience.



NARROW FRAME



Innovative design with frame size at 18mm only, make the screen into TV panel style

FULL TIME TENSION



Equipped with spring tensioned mechanism, tensile force around the fabrics is evenly distributed, which offer the best flatness for ultimate projection effect.

EASY MOUNTING



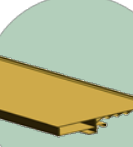
Simple but reliable allow quick installation and availability of alignment adjustment.

RIGID STRUCTURE



Insert type joint is applied to the entire frame, so the surface is perfectly flat.

KNOCK-DOWN



Making transportation to the installation easier, especially when dealing with stairs, elevators and corners. Assembles easily on site.

Specifications

Product Code	Screen Size (HxW, inches)	Viewing Area(mm) Height	Width	Frame Size (mm)	Packing Dimension LxWxH(mm)	N.W. (kg)	G.W. (kg)
16:9 HDTV Format							
PFF050067	84"(50"x67")	1276	1702	18	1838x308x144	6.3	8.6
PFF060080	100"(60"x80")	1524	2032	18	2168x308x144	7.6	10.4
PFF065087	109"(65"x87")	1657	2210	18	2346x308x144	8.4	11.3
PFF072096	120"(72"x96")	1829	2438	18	2574x308x144	9.4	12.6
PFF090120	150"(90"x120")	2286	3048	18	3184x308x144	12.3	16.1
16:9 HDTV Format							
PFF038067	77"(38"x67")	957	1702	18	1838x308x144	5.5	7.9
PFF045080	92"(45"x80")	1143	2032	18	2168x308x144	6.6	9.4
PFF049087	100"(49"x87")	1243	2210	18	2346x308x144	7.3	10.2
PFF054096	110"(54"x96")	1372	2438	18	2574x308x144	8.2	11.8
PFF059105	120"(59"x105")	1500	2667	18	2803x308x144	9.3	13.1
PFF065116	133"(65"x116")	1657	2946	18	3082x308x144	10.1	14.0
PFF068120	138"(68"x120")	1715	3048	18	3184x308x144	10.5	14.4
16:10 HDTV Format							
PFF042067	79"(42"x67")	1064	1702	18	1838x308x144	5.8	8.1
PFF050080	94"(50"x80")	1270	2032	18	2168x308x144	7.0	9.7
PFF054087	102"(54"x87")	1381	2210	18	2346x308x144	7.6	10.6
PFF060096	111"(60"x96")	1524	2438	18	2574x308x144	8.6	11.8
PFF075120	142"(75"x120")	1905	3048	18	3184x308x144	11.1	15.0

CINEPLUS FIXED FRAME SCREEN

The Fixed Frame series of projection screens is one of the best choices for home theater, thanks to its high contrast silver-grey fabric delivering outstanding optical performance.

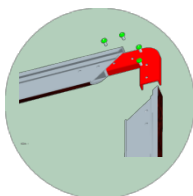
ELEGANT APPEARANCE

The aluminum alloy extruded frame with black velvet surround forms the image border; for an elegant, theatre-like appearance.



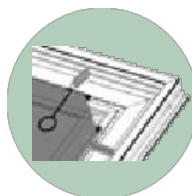
RIGID STRUCTURE

Aluminium-alloy frames are connected with insert-type corner brackets, which are made of steel



UNIFORM FLATNESS

The Cineplus spring mount system equalizes the tension on the fabric surface, providing the best uniformity and minimizing image distortion.



EASY INSTALLATION

Our new innovative wall mount bracket design makes un-skilled installation quick and easy. Your Cineplus screen can be installed and ready to use in minutes.



Specifications

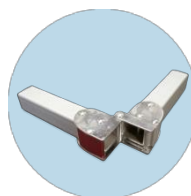
Product Code	Screen Size (HxW, inches)	Viewing Area(mm) Height Width	Frame Size (mm)	Packing Dimension LxWxH(mm)	N.W. (kg)	G.W. (kg)
4:3 Video Format						
SSF050067	84"(50"x67")	1276 1702	65	1897x250x140	6.5	8.7
SSF060080	100"(60"x80")	1524 2032	65	2227x250x140	7.9	10.3
SSF065087	109"(65"x87")	1657 2210	65	2405x250x140	8.6	11.3
SSF072096	120"(72"x96")	1829 2438	65	2633x250x140	9.6	12.5
SSF090120	150"(90"x120")	2286 3048	86	3323x250x170	12.8	20.4
SSF108144	180"(108"x144")	2743 3658	86	3933x250x170	15.9	26.5
16:9 HDTV Format						
SSF038067	77"(38"x67")	957 1702	65	1897x250x140	5.8	7.8
SSF045080	92"(45"x80")	1143 2032	65	2227x250x140	6.9	9.2
SSF049087	100"(49"x87")	1243 2210	65	2405x250x140	7.5	10.0
SSF053094	108"(53"x94")	1343 2388	65	2583x250x140	8.2	10.8
SSF059105	120"(59"x105")	1499 2667	86	2936x250x170	9.6	16.4
SSF074131	150"(74"x131")	1880 3327	86	3596x250x170	12.3	20.5
16:10 HDTV Format						
SSF042067	79"(42"x67")	1064 1702	65	1897x250x140	6.0	8.1
SSF050080	94"(50"x80")	1270 2032	65	2227x250x140	7.2	9.6
SSF054087	102"(54"x87")	1381 2210	65	2405x250x140	7.9	10.4
SSF059094	111"(59"x94")	1492 2388	65	2583x250x140	8.6	11.2
SSF074119	140"(74"x119")	1889 3023	86	3298x250x170	11.8	19.4
2.35:1 Cinema Format						
SSF029067	73"(29"x67")	724 1702	65	1897x250x140	4.1	6.2
SSF034080	87"(34"x80")	865 2032	65	2227x250x140	4.9	7.3
SSF037087	95"(37"x87")	940 2210	65	2405x250x140	5.4	7.9
SSF041096	120"(41"x96")	1037 2438	65	2633x250x140	5.6	8.5

EASY FOLD PORTABLE SCREEN

Vega Easy Fold Screen is specially designed for events, delivering presentation anytime and anywhere. It comes with a freight case for easy traveling. Its reinforced structure is suitable for either indoors or outdoors activities. Both front or rear projection fabrics are available.



STURDY FRAME DESIGN



Sturdy frame design with folding hinges. Can be easily erected without the need for tools.

USER-FRIENDLY



The height of the frame can be adjusted to give the optimum projection height by simply adjusting the button.

DRAPE (OPTIONAL)

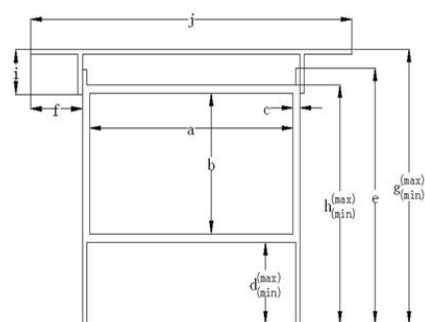


Optional drape kit can be used to mask the bottom as well as the surroundings of the viewing area of the screen.

CONVENIENT



All the frames, legs and fabrics can be packed into freight case for easy transportation and storage.



Specifications

Product Code	Screen Size (HxW, inches)	Viewing Area(mm)		Border (mm)	Floor Distance (d)		Overall Height (g)		Draper Height (max) (mm)	Overall Width (j) (mm)	Packing Dimension LxWxH(mm)	G.W. (kg)
		Height	Width		Max Height (mm)	Min Height (mm)	Max Height (mm)	Min Height (mm)				
4:3 Video Format												
ESF060080	100"(60"x80")	1524	2032	80	281	141	2235	2095	1691	4056	1000x380x365	28.0
ESF072096	120"(72"x96")	1829	2438	100	939	189	3238	2488	2708	4502	1060x380x475	35.0
ESF090120	150"(90"x120")	2286	3048	100	936	183	3692	2942	3161	5112	1260x380x505	45.0
ESF108144	180"(108"x144")	2743	3658	100	557	257	3770	3470	3161	5722	1260x380x565	49.0
ESF120160	200"(120"x160")	3048	4064	100	327	177	3845	3695	3161	6128	1260x380x565	51.0
ELF150200	250"(150"x200")	3810	5080	100	323	173	4611	4461	4062	7144	1620x445x395	54.2
											1620x445x650	67.0
ELF180240	300"(180"x240")	4572	6096	100	1368	168	6410	5210	6000	8160	1620x445x395	53.8
											1770x565x695	75.9
16:9 HDTV Format												
ESF045080	92"(45"x80")	1143	2032	80	330	184	1903	1753	1509	4056	1000x385x475	32.0
ESF054096	110"(54"x96")	1372	2438	100	424	121	2264	1963	1809	4502	1060x380x565	38.0
ESF068120	138"(68"x120")	1727	3048	100	391	241	2588	2438	2109	5112	1260x380x625	49.0
ESF081144	165"(81"x144")	2057	3658	100	754	154	3284	2684	2709	5722	1260x380x685	56.0
ESF090160	184"(90"x160")	2286	4064	100	871	271	3621	3021	3161	6128	1260x380x685	58.0
ELF135240	275"(135"x240")	3429	6096	100	677	227	4567	4126	4062	8160	1620x445x395	50.0
											1620x445x650	84.0
16:10 HDTV Format												
ESF050080	94"(50"x80")	1270	2032	80	425	145	1960	1810	1691	4056	1000x380x365	26.3
ESF060096	113"(60"x96")	1524	2438	100	281	141	2352	2202	1691	4502	1060x380x475	32.0
ESF075120	142"(75"x120"	1905	3048	100	901	151	2693	2543	2708	5112	1260x380x505	37.5
ESF090144	170"(90"x144")	2286	3658	100	936	183	3404	2955	3161	5722	1260x380x565	43.0
ESF100160	189"(100"x160")	2540	4064	100	659	359	3760	3160	3161	6128	1260x380x565	49.0
ELF125200	236"(125"x200")	3429	6096	100	283	196	4443	3843	3161	7144	1620x445x395	53.0
											1620x445x650	65.0
ELF150240	283"(150"x240")	3429	6096	100	787	187	4611	4461	4062	8160	1620x445x395	52.0
											1770x565x695	86.0

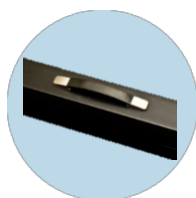
SCISSOR FLOOR PORTABLE SCREEN

Vega Large Portable Scissor Floor Screen is a great way to make presentations when a permanent installation on wall or ceiling is not feasible. It is ideal for rental, office conference and hospitality application. Large size is up to 120" 16:9 format.



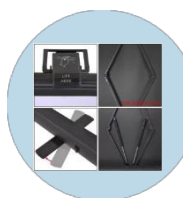
CONVENIENCE FOR TRAVELING

This compact and light weight portable scissor screen is easy to carry, set up and unwind. Its casing integrate carrying handle which makes your screen a product of utmost flexibility.



QUICK SET-UP

Put it on the floor, open the case and lift with one finger to desired height. Its pneumatic tensioning system brings the screen erect quickly and without effort. The height can also be easily adjusted to your need.



STABILITY

Dual point support scissor structure with strong rotatable foot offer ultimate support and stability.



FLATNESS

It gives superior flat screen surface because of its large 32mm roller and end up provide unrivalled picture quality.



Specifications

Product Code	Screen Size (HxW, inches)	Viewing Area(mm) Height	Width	Border(mm) Upper / Lower / Side	Product Dimension LxWxH (mm)	Packing Dimension LxWxH(mm)	N.W. (kg)	G.W. (kg)
4:3 Video Format								
TPS036048	60"(36"x48")	914	1219	30 / 1046 / 30	1398x125x100	1474X165X148	8.5	9.3
TPS048064	80"(48"x64")	1219	1626	30 / 741 / 30	1805x125x100	1881X165X148	11.4	12.4
TPS060080	100"(60"x80")	1524	2032	30 / 781 / 40	2231x125x100	2307x165x148	14.2	15.6
16:9 HDTV Format								
TPS029052	60"(29"x52")	737	1321	30 / 1217/ 30	150X125X100	1584X165X148	9.2	10.1
TPS040070	80"(40"x70")	996	1770	30 / 960 / 30	1949X125X100	2025X165X148	12.4	13.6
TPS045080	92"(45"x80")	1143	2032	30 / 1162 / 40	2231X125X100	2307X165X148	14.2	15.6
16:10 Wide Format								
TPS030048	57"(30"x48")	762	1219	30 / 1198 /30	1398X125X100	1474X165X148	8.5	9.3
TPS038061	72"(38"x61")	965	1549	30 / 995 / 30	1728X125X100	1804X165X148	10.8	11.9
TPS048077	91"(48"x77")	1219	1956	30 / 1086 / 30	2135X125X100	2211X165X148	13.7	15
TPS050080	94"(50"x80")	1270	2032	30 / 1035 / 40	2231x125x100	2307X165X148	14.2	15.6
TPS053085	100"(53"x85")	1346	2159	30 / 781 / 40	2358X125X100	2434X165X148	15.1	16.5

POLE FLOOR *PORTABLE SCREEN*

Vega Portable Pole Floor Screen is the ideal solution for mobile presentation and travelling. Set up and packed up in next to no time and it tends to take up less space and look neater. The new 16:9 format is targeted at the home cinema market.



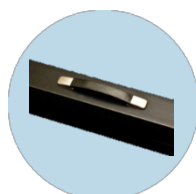
STABILITY

It has two feet which rotate out when setting up to ensure stability. The aluminum casing provides rugged protection of your screen.



TELESCOPIC POLE

The screen held perfectly taut by a telescopic upright which also easy to be adjusted infinitely and flexibly. It also supply with an integral keystone eliminator.



CONVENIENT

This compact and light weight portable scissor screen is easy to carry, set up and unwind. Its casing integrate carrying handle which makes your screen a product of utmost flexibility.



Specifications

Product Code	Screen Size (HxW, inches)	Viewing Area(mm)		Border(mm) Upper / Lower / Side	Product Dimension LxWxH(mm)	Packing Dimension LxWxH(mm)	N.W. (kg)	G.W. (kg)
		Height	Width					
4:3 Video Format								
POF036048	60"(36"x48")	914	1219	30 / 1046 / 30	1405X116X68	1474X165X148	7.5	8.6
POF048064	80"(48"x64")	1219	1626	30 / 741 / 30	1812X116X68	1881X165X148	9.0	10.5
POF060080	100"(60"x80")	1524	2032	30 / 436 / 40	2233X116X68	2302X165X148	11.2	13.1
16:9 HDTV Format								
POF029052	60"(29"x52")	737	1321	30 / 1217/ 30	1515X116X68	1584X165X148	7.5	8.7
POF040070	80"(40"x70")	996	1770	30 / 960 / 30	1956X116X68	2025X165X148	9.3	10.6
POF045080	92"(45"x80")	1143	2032	30 / 817 / 40	2233X116X68	2302X165X148	11.2	13.1

BACKYARD *THEATER SCREEN*

Vega Portable Pole Floor Screen is the ideal solution for mobile presentation and travelling. Set up and packed up in next to no time and it tends to take up less space and look neater. The new 16:9 format is targeted at the home cinema market.



EASY SETUP & TAKEDOWN

With simple design, the screen is extremely easy to set up. You can create your own portable movie theatre in minutes wherever you need it and dissemble it quickly.



EASY PORTABILITY

The lightweight screen kit comes with a portable carrying bag for easy storage as well as transportation.



WATERPROOF MATERIALS

The screen can withstand light rain as it is made of waterproof polyester fabric, aluminum and plastic.



BUDGET FRIENDLINESS

The screen is inexpensive & affordable. You can enjoy ultimate theatre-like movie watching experience at a very low cost.

Specifications								
Product Code	Screen Size	Viewing Area(mm)		Border Size (mm)	Floor Clearance	Packing Dimension LxWxH(mm)	N.W. (kg)	G.W. (kg)
	(HxW, inches)	Height	Width	Upper / Lower / Side				
4:3 Video Format								
OMS060080	100"(60"x80")	1524	2032	55 / 55 / 55	420	1095x440x140	4.9	5.8
OMS072096	120"(72"x96")	1829	2438	55 / 55 / 55	420	1095x440x140	6.2	7.1
16:9 HDTV Format								
OMS045080	92"(45"x80")	1143	2032	55 / 55 / 55	420	1095x440x140	4.3	5.2
OMS054096	110"(54"x96")	1372	2438	55 / 55 / 55	420	1095x440x140	5.4	6.3

DESKVIEW MKII PRESENTATION SCREEN

A new generation presentation screen - Vega Desktop MKII equipped light weight and ultra-fast setup mechanism. Now user allow the perfect fit for on-the-go presentations or video games. With simple pull-up mechanism, you can set up the screen in seconds and store it easily in its self-contained carrying case when not in use.



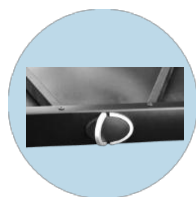
Easy Mobility

This portable screen is your perfect travel companion. The compact and lightweight design with a carrying handle attached makes transport and storage easier than ever.



Super-fast Easy Setup

Simply but sturdy scissor mechanism allows instant setup to desired position. You are ready to present or experience video gaming in a flash.



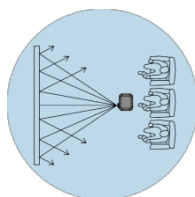
Simple Operation

User can easily pull up the screen by using foldable pull up handles on top of the screen.



Carrying Bag

Optional carrying bag is available for travelling.



WIDE

The surface diversifies the light beams into different directions, offering wider viewing angles and helping to eliminate an unsightly hot spot effect from the projector.



Stand upright

Contributed by a rotatable support leg in the middle, VEGA Deskview MKII now can hold at upright position better than previous generation.



Compact Packaging

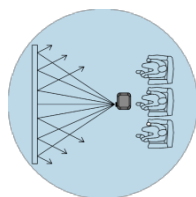
Compact and simple packaging design help to save storage space, as well as minimize transportation cost.

Specifications

Product Code	Screen Size (HxW, inches)	Viewing Area(mm)		Border Size (mm)	Overall	Packing Dimension	N.W. (kg)	G.W. (kg)
		Height	Width	Upper / Lower / Side	Height(mm)	LxWxH(mm)		
4:3 Video Format								
BD2024032	40"(24"x32")	610	813	30 / 30 / 20	900x85x85	960x95x95	2.0	2.5
BD2030040	50"(30"x40")	762	1016	30 / 30 / 20	1100x85x85	1160x95x95	2.5	3.0
16:9 HDTV Format								
BD2025044	50"(25"x44")	623	1107	30 / 30 / 20	1190x85x85	1250x95x95	2.5	3.0

DESKVIEW PRESENTATION SCREEN

Vega Desktop Screen is the perfect fit for on-the-go presentations or video games. With simple pull-up mechanism, you can set up the screen in seconds and store it easily in its self-contained carrying case when not in use.



WIDE

The surface diversifies the light beams into different directions, offering wider viewing angles and helping to eliminate an unsightly hot spot effect from the projector.



Quick and Easy Setup

The simple yet sturdy design allows simple, quick and easy setup on any tabletop/other flat surface to be done by one person. You are ready to present or experience video gaming in a flash.



Easy Mobility

This portable screen is your perfect travel companion. The compact and lightweight design with a carrying handle attached makes transport and storage easier than ever.



Versatile Screen Materials

Instead of standard polyester woven based matte white fabric (MWB), the screen can also be incorporated with fiberglass fabric based matte white fabric (MWA) for better flatness, or high gain silver fabric (HPG) for higher brightness depending on your needs. Pair the screen with the right fabric choice with any home, business or even pocket projector to maximize the quality of projected images.

Specifications

Product Code	Screen Size (HxW, inches)	Viewing Area(mm)		Border Size (mm)	Overall Height(mm)	Packing Dimension LxWxH(mm)	N.W. (kg)	G.W. (kg)
		Height	Width	Upper / Lower / Side				
4:3 Video Format								
BDS018024	30"(18"x24")	457	610	0 / 0 / 20	730x95x58	795x145x108	2.0	2.4
BDS024032	40"(24"x32")	610	813	0 / 0 / 20	998x95x58	998x145x108	2.3	2.8
BDS030040	50"(30"x40")	762	1016	0 / 0 / 20	1136x95x58	1201x145x108	2.9	3.6
16:9 HDTV Format								
BDS015026	30"(15"x26")	381	660	0 / 0 / 20	780x95x58	845x145x108	2.1	2.5
BDS020035	40"(20"x35")	508	889	0 / 0 / 20	1009x95x58	1074x145x108	2.6	3.2
BDS025044	50"(25"x44")	635	1118	0 / 0 / 20	1238x95x58	1303x145x108	3.2	3.9
16:10 HDTV Format								
BDS016025	30"(16"x25")	406	635	0 / 0 / 20	755x95x58	820x145x108	2.0	2.5
BDS021034	40"(21"x34")	533	864	0 / 0 / 20	984x95x58	1049x145x108	2.6	3.2
BDS027042	50"(27"x42")	686	1067	0 / 0 / 20	1187x95x58	1252x145x108	3.0	3.8

VESTA PORTABLE TRIPOD SCREEN

Vega Tripod screen is designed with a standard keystone eliminator screen. It is very easy to use and can be taken everywhere for projecting videos or slides. Suitable for training rooms, small size board room, it is frequently used for rental application.



KEYSTONE

Provide Keystone eliminator, allows multimedia projectors that are not placed perpendicular to the horizontal centerline of the screen (too high or too low) to skew the output image, thereby making it rectangular.



STABILITY

Perfectly symmetrical tripod for great stability and is designed for intensive use.



SAFETY LOCK

Self lock handle for optimum height adjustment and portability.



CARRYING BAG (OPTIONAL)

Convenience for transportation and storage.



USER-FRIENDLY

Quick and easy to set up and release.



Specifications

Product Code	Screen Size (HxW, inches)	Viewing Area(mm)		Border(mm)	Product Dimension LxWxH (mm)	Packing Dimension LxWxH(mm)	N.W. (kg)	G.W. (kg)
		Height	Width	Upper / Lower / Side				
1:1 Square Format								
VET050050	70"(50"x50")	1270	1270	30 / 50 / 30	1409x150x75	1480x175x130	6.2	7.1
VET060060	85"(60"x60")	1524	1524	30 / 50 / 30	1663x150x75	1735x175x130	7.1	8.1
VET070070	100"(70"x70")	1778	1778	30 / 50 / 30	1917x150x75	1990x175x130	8.0	9.1
VET080080	113"(80"x80")	2032	2032	40 / 50 / 40	2171x150x75	2238x175x130	9.0	10.3
VET096096	136"(96"x96")	2360	2360	30 / 30 / 40	2521x150x75	2590x175x130	10.4	11.8
4:3 Video Format								
VET050067	84"(50"x67")	1280	1707	30 / 50 / 30	1846x150x75	1915x175x130	7.4	8.5
VET060080	100"(60"x80")	1524	2032	40 / 50 / 40	2171x150x75	2238x175x130	8.5	9.8
VET072096	120"(72"x96")	1770	2360	40 / 50 / 40	2521x150x75	2590x175x130	9.7	11.2
16:9 HDTV Format								
VET045080	92"(45"x80")	1143	2032	40 / 400 / 40	2171x150x75	2238x175x130	8.4	9.7
VET054096	110"(54"x96")	1328	2360	40 / 400 / 40	2521x150x75	2590x175x130	9.6	11.1

ATHENA *ECO-LINE PORTABLE TRIPOD SCREEN*

Vega ATHENA eco-line tripod screen is designed with a standard keystone eliminator screen. It is very easy to use and can be taken everywhere for projecting videos or slides. Suitable for training rooms, small size board room, it is frequently used for rental application.

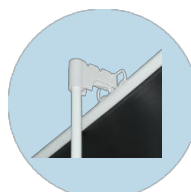


ENVIRONMENTAL FREINDLY



The housing is made of pre-painted steel sheet by special extrusion tooling, eliminating the environmental impact of powder coating.

KEYSTONE



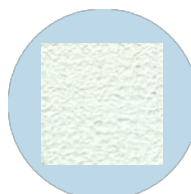
Provide Keystone eliminator, allows multimedia projectors that are not placed perpendicular to the horizontal centerline of the screen (too high or too low) to skew the output image, thereby making it rectangular.

SAFETY LOCK



Self lock handle for optimum height adjustment and portability.

MATTE WHITE FABRIC



Multi-purpose matte white fabric offering gain factor at 1.0 with 110 degree viewing angle.

Specifications

Product Code	Screen Size (HxW, inches)	Viewing Area(mm) Height Width	Border(mm) Upper / Lower / Side	Product Dimension LxWxH(mm)	Packing Dimension LxWxH(mm)	N.W. (kg)	G.W. (kg)
1:1 Square Format							
BET070070	99"(70"x70")	1778 1778	0/0/30	1957x145x85	2015x175x130	8.5	9.7
BET080080	113"(80"x80")	2032 2032	0/0/40	2231x145x85	2289x175x130	9.8	11.1
BET087087	123"(87"x87")	2210 2210	0/0/40	2409x145x85	2467x175x130	10.2	11.6
BET096096	136"(96"x96")	2358 2358	0/0/40	2557x145x85	2615x175x130	11.4	12.9
4:3 Video Format							
BET052070	87"(52"x70")	1334 1778	0/0/30	1957x145x85	2015x175x130	8.2	9.4
BET060080	100"(60"x80")	1524 2032	0/0/40	2231x145x85	2289x175x130	9.5	10.8
BET065087	109"(65"x87")	1657 2210	0/0/40	2409x145x85	2467x175x130	10.0	11.3
BET072096	120"(72"x96")	1769 2358	0/0/40	2557x145x85	2615x175x130	11.1	12.6
16:9 HDTV Format							
BET039070	80"(39"x70")	1000 1778	30/300/30	1957x145x85	2015x175x130	8.2	9.4
BET045080	92"(45"x80")	1143 2032	40/300/40	2231x145x85	2289x175x130	9.5	10.8
BET049087	109"(49"x87")	1243 2210	40/300/40	2409x145x85	2467x175x130	10.0	11.3
BET054096	110"(54"x96")	1372 2438	40/300/40	2557x145x85	2615x175x130	11.1	12.6

CERES ECO-LINE PORTABLE TRIPOD SCREEN

Vega CERES eco-line tripod screen is designed with a standard keystone eliminator screen. It is very easy to use and can be taken everywhere for projecting videos or slides. Suitable for training rooms, small size board room, it is frequently used for rental application.



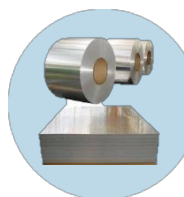
KEYSTONE

Provide Keystone eliminator, allows multimedia projectors that are not placed perpendicular to the horizontal centerline of the screen (too high or too low) to skew the output image, thereby making it rectangular.



DETACHABLE STRUCTURE

Casing can be detached from the leg.



DURABLE

Made of galvanized steel, the housing is ultimate rigid and stand straight under any circumstances.



Specifications								
Product Code	Screen Size (HxW, inches)	Viewing Area(mm) Height Width	Border(mm) Upper / Lower / Side	Product Dimension LxWxH(mm)	Packing Dimension LxWxH(mm)	N.W. (kg)	G.W. (kg)	
1:1 Square Format								
CET060060	85"(60"x60")	1524 1524	50/30/30	1625x72x72	1685x120x190	8.9	10	
CET070070	99"(70"x70")	1778 1778	50/30/30	1885x72x72	1945x120x190	10.4	11.4	
CET080080	113"(80"x80")	2032 2032	50/40/40	2152x72x72	2212x120x190	12.0	13.0	
CET096096	136"(96"x96")	2358 2358	50/40/40	2558x72x72	2618x120x190	13.0	14.5	
4:3 Video Format								
CET050067	80"(50"x67")	1280 1707	50/40/40	1885x72x72	1945x120x190	6.8	8.0	
CET060080	100"(60"x80")	1524 2032	50/40/40	2205x72x42	2265x120x190	8.2	9.6	
CET072096	120"(72"x96")	1829 2438	50/40/40	2615x72x72	2675x120x190	9.7	11.2	
16:9 HDTV Format								
CET045080	92"(45"x80")	1143 2032	300/40/40	2152x72x72	2212x120x190	9.8	10.8	
CET049087	100"(49"x87")	1245 2210	300/40/40	2330x72x72	2390x120x190	12.0	13.0	
CET052092	106"(52"x92")	1321 2337	300/40/40	2457x72x72	2517x120x190	12.5	13.5	
CET054096	110"(54"x96")	1372 2438	300/40/40	2558x72x72	2618x120x190	13.0	14.0	

Standard External RF remote control set



Model: RS410103Z

- Motor reversing switch
- Up and down key reversing switch
- Auxiliary dry contact control port
- 20 memories
- Up to 100 meter control range
- Max. loading $\leq 300W$

Standard External IR remote control set



Model: RS410111Z

- Auxiliary dry contact control port
- Up to 10 meter control range
- Max. loading $\leq 300W$

Standard External 3-in-1 remote control set (RF + IR + 12V trigger + Manual Panel)



Model: RS410112Z

- Simultaneous RF & IR control
- 12V Trigger input
- Manual control panel input
- Up to 80 meters control range (RF)
- Up to 8 meters control range (IR)
- Max. loading $\leq 300W$



Optional - Receiver



AC227-01

AC228-01

Model: AC227-01 / AC228-01

- 1 Channel (AC227-01) / 2 Channel (AC228-01)
- Radio receiver with manual switches
- Max. loading $\leq 300W$
- Shock-proof TV5 level relay
- SMT automatically assembly, damp-proof craft
- Fit for 86x86 base box

Optional – Handheld Transmitter



AC123-01

AC123-06

Model: AC123-01 / AC123-06

- Battery type – CR2032 x 2 (6V)
- Operate Mode – RF
- Transmission Power $\leq 10W$
- AC123-01 – 1 channel
- AC123-06 – 6 channels

Optional – 86 Size Transmitter



AC125-01

AC126-01

Model: AC125-01 / AC126-01

- 86mm like RF transmitter.
- No cable connection is required
- Can stick on wall or install on 86x86 base box
- Transmission Power $\leq 10W$
- AC125-01 – 1 channel
- AC126-01 – 2 channels

Optional – Radio AC Trigger



AC512-02

Model: AC512-02

- Work with projector power over 40W
- Auto detect projector' s operating current, send out RF signal to trigger receiver to control the screen
- Standard power socket, easy to install
- With hanging holes at the back cover
- Adjustable current input to fit different projectors

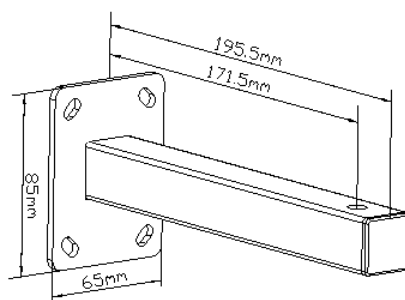
Wiring Diagram



Wall Mount Bracket



WR200



Model: WR200

- Max. loading: 30kg (per pairs)
- Distance: 171.5mm
- Color: White
- Material: Cold Roll Steel
- Weight (G.W. / N.W.): 0.86kg / 0.77kg (per pairs)
- Packing Dimension: Outer box: 655 x 475 x 400mm (50 pairs)
Inner box: 220 x 120 x 70mm (1 pair)

FABRICS SPECIFICATIONS

Code	Description	Gain	Viewing Angle	High Definition	3D Enhanced	Fire retardant	Color Reproduction	High Contrast	Mildew Resistant	Acoustic Transparent	Thickness	Weight
												
MWA	PVC laminated, Fiberglass, Front Projection Matte White	1.10	120°	√		√			√		0.42±0.02mm	520±20g/sq.m
MWB	PVC laminated, Polyester Woven, Front Projection Matte White	1.10	110°			√			√		0.42±0.02mm	520±20g/sq.m
MWK	PVC laminated, Polyester Warp Knitting, Front Projection, Matte White	1.00	110°			√			√		0.38±0.02mm	440±20g/sq.m
MWC	PVC laminated, Fiberglass, Front Projection Matte White	1.10	110°						√		0.62±0.02mm	820±20g/sq.m
MWE	PVC laminated, Polyester Warp Knitting, Front Projection Matte White	1.10	110°			√			√		0.50±0.02mm	600±20g/sq.m
GRY	PVC laminated, Polyester Woven, Front Projection, Matte Grey	0.85	110°				√	√	√		0.45±0.02mm	520±20g/sq.m
FWA	PVC Front Projection Matte White	1.10	110°	√		√			√		0.38±0.02mm	350±20g/sq.m
FWB	PVC Front Projection Matte White	1.10	110°	√		√			√		0.32±0.02mm	330±20g/sq.m
FWC	PVC Front Projection Matte White	1.10	110°	√		√			√		0.25±0.02mm	310±20g/sq.m
FGB	PVC Front Projection Matte Grey	0.85	100°				√	√	√		0.32±0.02mm	330±20g/sq.m
FGG	PVC Front Projection Silver Grey	1.50	60°	√	√		√	√	√		0.38±0.02mm	380±20g/sq.m
HPG	Front Projection 3D Silver	3.00	60°	√	√		√	√	√		0.2±0.02mm	260±20g/sq.m
RGG	PVC Rear Projection Grey	1.50	120°	√		√			√		0.32±0.02mm	330±20g/sq.m
ATW	PVC Front Projection Acoustic Transparent Matte White	0.95	110°	√					√	√	0.32±0.02mm	350±20g/sq.m
ATG	PVC Front Projection Acoustic Transparent Silver	1.45	60°	√	√		√	√	√	√	0.38±0.02mm	380±20g/sq.m
BCA	Front Projection Matte White Woven Acoustic Transparent	0.95	110°	√						√	0.5±0.02mm	480±20g/sq.m
BCB	Front Projection Dark Grey Woven Acoustic Transparent	0.85	110°				√	√		√	0.6±0.02mm	480±20g/sq.m





VEGA
VEGA MFG. LTD.
維佳產品。

VEGA MFG. LTD

21/F, Wyler Centre Phase 2,
192-200 Tai Lin Pai Road,
Kwai Chung, N.T.
Hong Kong

T : (852) 2310 1138
F : (852) 2310 2068
Email : generalm@vegamfg.com.hk

www.vegamfg.com.hk