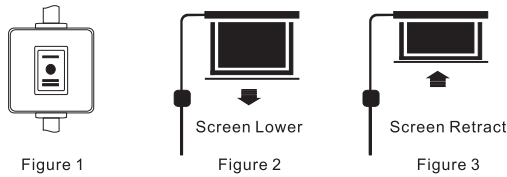
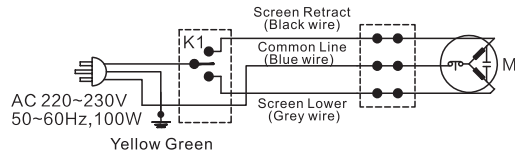


Motorized screen (M) manual control method:

- In-line switch (Figure 1)
- Lower (Figure 2): Switch to “=”, screen will automatically lower down to desire limit position.
- Retract (Figure 3): Switch to “-”, screen will automatically retract to setting limit position.
- Stop: Switch to “●”, screen will stop immediately.



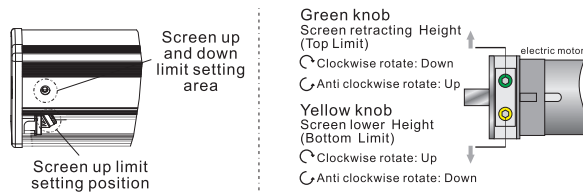
Motorized screen (M) circuit diagram:



Screen Limit setting:

- The screen is fitted with 2 limits. The limits automatically stop the screen in the fully Up(Top limit) and fully Down(bottom limit) positions. You can adjust the bottom limit to set your desired viewing height.

Note: When screen retract height over the setting limit, fabric will automatically lower down. For this case, please press stop switch (By manual or RF control), micro adjust on green knob in clockwise direction is fine.



- **Fault Clearance:** Designed with limit over adjustment protection switch, when over adjust, the bottom bar will touch the switch, and screen will lower automatically. When this situation happened, Please press stop button, and toward the “-” direction clockwise rotate micro-adjusting knob, remember it’s in Green color.

Caution:

Please operate carefully and slowly, it might cause motor and screen damage when over retracting. When setting lower limit, please setting within 10cm. If over setting, it might cause fabric break and fall.

Screen Voltage data: AC220-230V 50-60HZ, current0.5A, power 100W.
 RF Remote control(F): Voltage 3V,Use with CR2450*1 Battery, Ratio Frequency: 433MHZ, Maximum Control Distance: 15 Meter.
 RF Remote control(R): Voltage 12V,Use with 27A*1 Battery, Maximum Control Distance: 8 Meter.

Liberty Grandview®

Liberty Grandview®

Protecting your screen:

To ensure long lasting viewing enjoyment keep the screen rolled up when not in use. Check both the front and back surfaces before retracting into the case to make sure it is free of dust,dirt, insects or other foreign matter. Use a soft brush or cloth to lightly remove any foreign particles.

Cleaning your screen:

Use warm water with a mild detergent to remove any marks on the surface or screen casing (only dab, do not rub). Immediately dry the screen with a soft cloth or towel. Do not leave it to air dry.

Never use any solvents, chemicals or abrasive cleaners on the screen surface as they can permanently damage the screen surface.



AV-VISION
 EQUIPMENTS (INDIA) (P) LTD.

Mktg. Off: 1-20-248, 2nd Floor, (Snowcem Paints Lane),
 Rasoolpura, Secunderabad-500 003, A.P., INDIA.
 Tel : +91(0)40-2781 5419 / 2781 4350 / 2789 0599 / 2781 8419 / 20 / 21
 Fax : +91(0)40-2781 5399 (Off.) / 2781 4612 (Mktg)
 Mobile: + 91- (0) 99590 24099 / 98490 24099
 E-mail : sales@av-visionindia.co.in
 Website : www.av-visionindia.co.in

Grandview Crystal Screen Canada Ltd.

#11- 3751 North Fraser Way,
 Marine Way Business Centre,
 Burnaby, BC, Canada V5J 5G4
 Tel: 1-604-412-9777 Fax: 1-604-412-9796
 Website: www.grandviewscreen.ca

Guangzhou Grandview Crystal Screen Co., Ltd.

No.43 South International Trade Avenue, Hualong Town,
 Panyu, Guangzhou, Guangdong, China
 Tel: +8620-8489-9499 Fax: +8620-8480-3343
 Website: www.grandviewscreen.com
 www.grandviewscreen.com.cn

**FANCY SERIES TAB-TENSION SCREEN
 INTELLIGENT MOTORIZED SCREEN**

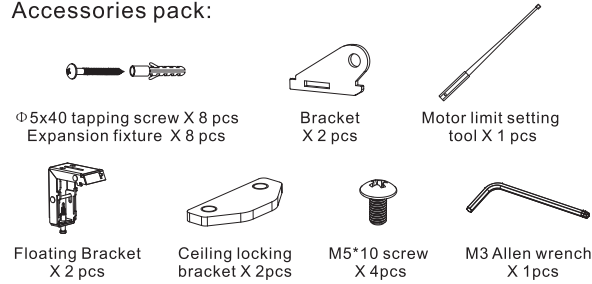
Model:
 FC-M
 FC-MI
 FC-MF

Dear Customers:

Thank you for the purchasing of Grandview Fancy series screen. Before your normal usage of product, please read the specification first, and keep it well for future reference.

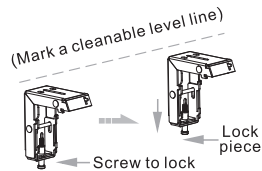
Preparation for installation:

Accessories pack:

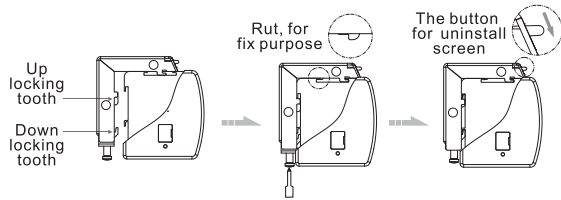


Wall/Ceiling installation method

- Install bracket onto wall/ceiling that can bear such weight, and keep screen two sides on a same level. (Distance from casing end with 10cm), as below figure:



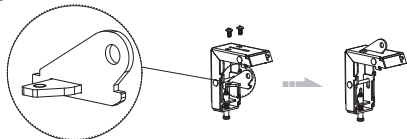
- Hold the casing two ends flatly onto the bracket then push into the bracket, when the locking tooth fixed, you will hear a locking sound that means screen already fixed onto bracket safely. Lock screw and fix screen. As figure:



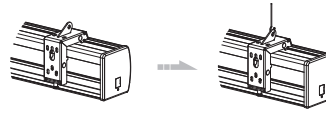
Note: When taking off screen, loosen the bottom screw first and push the top loosen button, then you can easily take the screen off, as above figure:

Ceiling hanging method

- Let ceiling locking bracket go through bracket, use hanging bracket lock into the rut and it has a hanging hole there, as figure:

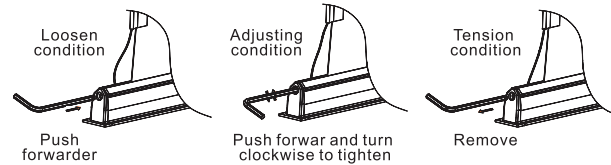


- Take reference same as wall/ceiling installation, measure installation distance and mark position, the fix screen casing steady with bracket.
- According to site installation height, install hook onto ceiling, then hang the screen through bracket hole. As figure:



The adjustment of screen tension thread

- Hold the under bar, using the M3 Allen wrench insert into the hexagonal hold push forward a little, slightly turning and adjust to desire tension (Clockwise turning to tighten, opposite means to loosen), then remove adjustment key to finish adjustment.



Warning: Before operate screen, make sure the sticker on casing and under bar is removed.

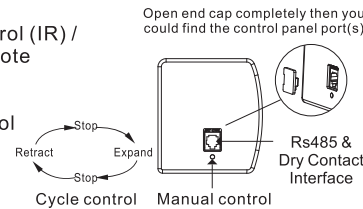
Importance

- Please make sure the installation position (ceiling or wall) or hang device can suffer from at least 25KG, otherwise it may cause danger.
- The product is using single-phase AC power, please use a socket with earth wire and make sure the earth wire is well connected.
- For in-line switch motorized screen, if necessary equip with extra high voltage control, please must operate by a professional engineer, and make sure central control between screen retract and screen expand has timing delay device.(0.2 second at least)

Control Option

Intelligent motorized screen has 4 control options:

- Manual Control
- Infrared Remote Control (IR) / Radio frequency Remote Control(RF)
- Dry Contact Control
- RS485 / RS232 Control

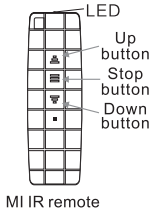


A.Manual Control:

The button is on the left side of casing(Close to Rs485 & Dry Contact Interface), this is a cycle control button.

B.IR Remote Control(MI)/RF Control(MF):

- Press Up button to retract the screen
- Press Stop button to stop the screen
- Press Down button to lower the screen
- The controller is pre-setting in factory with the screen, also can reset if necessary.



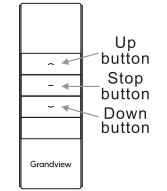
MI IR remote

Remote Pairing:

Power on the screen and press "up & stop" within 10 seconds to active Pairing mode. Then press up button to move the screen and press down to lower the screen. When "up & down" working, it means programming done.

Remote un-Pairing:

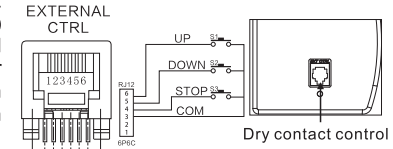
Power on the screen and press "up & stop" within 10 seconds to active un-Pairing mode. Then press up button to move the screen and press down to lower the screen.



MF RF remote

C.Dry contact Control (Wiring instruction)

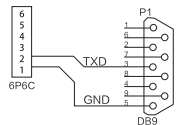
Connect via Rs12 input (6P6C type) Line 3- 6 are control line, Control Emitter Function, 3 Common line, 4 Stop, 5 Screen down, 6 Screen up.



Dry contact control

D.RS232/485 Input setting (Wiring instruction)

Connect via RS12 input (6P6C type), Line 1 & line 2 are control line (For RS485 connection), 1 D-, 2D+, Rs232 Wiring instruction (see the right wiring map).

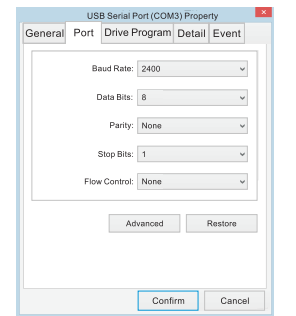


RS485/RS232 Input settings /Close Contact

- Baud Rate: 2400
- Data Bits: 8 bits
- Parity Check: None
- Stop Bits: 1 bits

HEX Control Code:

- Screen Up: FF EE EE EE DD
- Screen Stop: FF EE EE EE CC
- Screen Down: FF EE EE EE EE
- Address Code: FF EE EE EE AA (Some third party device may require this command)



Important Notes:

- When RS232 / RS485 Connection fail, please exchange wiring line.
- Loop Resistance ≤ 20Ω.
- Don't wiring in parallel with strong interaction source.